

## Rak rabbit pAb

**Cat#: orb766196 (Manual)**

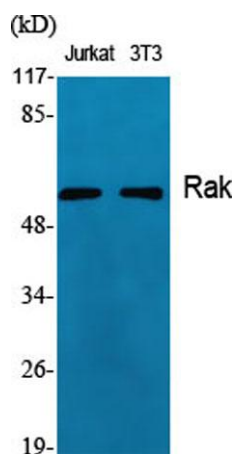
For research use only. Not intended for diagnostic use.

<b>Product Name</b>	Rak rabbit pAb
<b>Host species</b>	Rabbit
<b>Applications</b>	WB;IHC;IF;ELISA
<b>Species Cross-Reactivity</b>	Human;Mouse;Rat
<b>Recommended dilutions</b>	Western Blot: 1/500 - 1/2000. Immunohistochemistry: 1/100 - 1/300. Immunofluorescence: 1/200 - 1/1000. ELISA: 1/10000. Not yet tested in other applications.
<b>Immunogen</b>	The antiserum was produced against synthesized peptide derived from human FRK. AA range:71-120
<b>Specificity</b>	Rak Polyclonal Antibody detects endogenous levels of Rak protein.
<b>Formulation</b>	Liquid in PBS containing 50% glycerol, 0.5% BSA and 0.02% sodium azide..
<b>Storage</b>	Store at -20°C. Avoid repeated freeze-thaw cycles.
<b>Protein Name</b>	Tyrosine-protein kinase FRK
<b>Gene Name</b>	FRK
<b>Cellular localization</b>	Cytoplasm . Nucleus . Predominantly found in the nucleus, with a small fraction found in the cell periphery.
<b>Purification</b>	The antibody was affinity-purified from rabbit antiserum by affinity-chromatography using      epitope-specific immunogen.
<b>Clonality</b>	Polyclonal

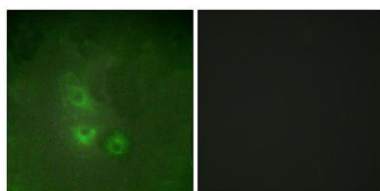
<b>Concentration</b>	1 mg/ml
<b>Observed band</b>	55kD
<b>Human Gene ID</b>	2444
<b>Human Swiss-Prot Number</b>	P42685
<b>Alternative Names</b>	FRK; PTK5; RAK; Tyrosine-protein kinase FRK; FYN-related kinase; Nuclear tyrosine protein kinase RAK; Protein-tyrosine kinase 5

#### Background

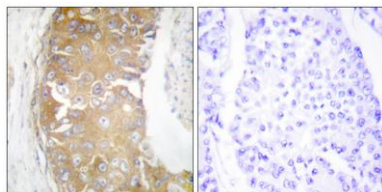
The protein encoded by this gene belongs to the TYR family of protein kinases. This tyrosine kinase is a nuclear protein and may function during G1 and S phase of the cell cycle and suppress growth. [provided by RefSeq, Jul 2008],



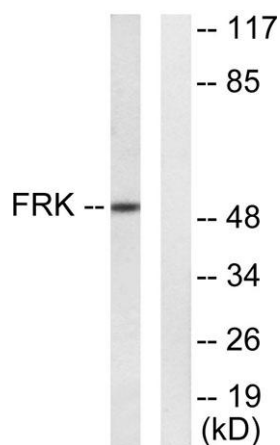
Western Blot analysis of various cells using Rak Polyclonal Antibody



Immunofluorescence analysis of HUVEC cells, using FRK Antibody. The picture on the right is blocked with the synthesized peptide.



**Immunohistochemistry analysis of paraffin-embedded human breast carcinoma tissue, using FRK Antibody. The picture on the right is blocked with the synthesized peptide.**



**Western blot analysis of lysates from Jurkat cells, using FRK Antibody. The lane on the right is blocked with the synthesized peptide.**