

Rabenosyn-5 rabbit pAb

Cat#: orb766172 (Manual)

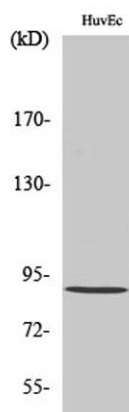
For research use only. Not intended for diagnostic use.

Product Name	Rabenosyn-5 rabbit pAb
Host species	Rabbit
Applications	WB;ELISA;IHC
Species Cross-Reactivity	Human;Mouse
Recommended dilutions	WB 1:500-2000;IHC-p 1:50-300; ELISA 2000-20000
Immunogen	The antiserum was produced against synthesized peptide derived from human ZFYVE20. AA range:145-194
Specificity	Rabenosyn-5 Polyclonal Antibody detects endogenous levels of Rabenosyn-5 protein.
Formulation	Liquid in PBS containing 50% glycerol, 0.5% BSA and 0.02% sodium azide..
Storage	Store at -20°C. Avoid repeated freeze-thaw cycles.
Protein Name	Rabenosyn-5
Gene Name	ZFYVE20
Cellular localization	Cell membrane; Lipid-anchor; Cytoplasmic side. Early endosome membrane ; Lipid-anchor. Enriched in endosomes that are in close proximity to clathrin-enriched regions at the cell surface. .
Purification	The antibody was affinity-purified from rabbit antiserum by affinity-chromatography using epitope-specific immunogen.

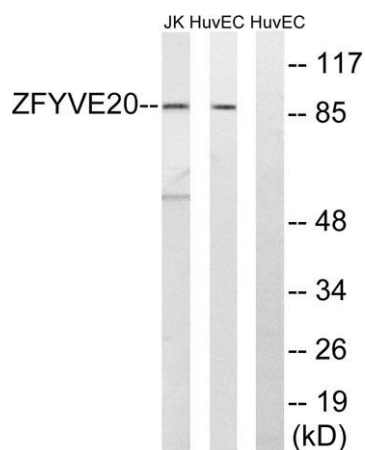
Clonality	Polyclonal
Concentration	1 mg/ml
Observed band	89kD
Human Gene ID	64145
Human Swiss-Prot Number	Q9H1K0
Alternative Names	ZFYVE20; Rabenosyn-5; 110 kDa protein; FYVE finger-containing Rab5 effector protein rabenosyn-5; Zinc finger FYVE domain-containing protein 20

Background

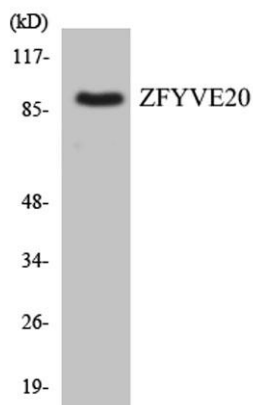
This gene encodes a protein that belongs to the FYVE zinc finger family of proteins. The encoded protein interacts with Ras-related proteins that regulate membrane trafficking. A missense mutation in this gene is associated with a defect in the early endocytic pathway. Alternative splicing results in multiple transcript variants. [provided by RefSeq, Oct 2014],



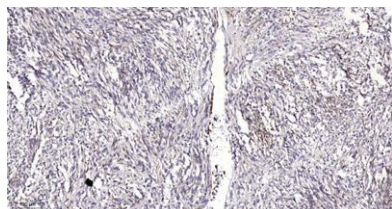
Western Blot analysis of various cells using Rabenosyn-5 Polyclonal Antibody diluted at 1:1000



Western blot analysis of lysates from HUVEC and Jurkat cells, using ZFYVE20 Antibody. The lane on the right is blocked with the synthesized peptide.



Western blot analysis of the lysates from COLO205 cells using ZFYVE20 antibody.



Immunohistochemical analysis of paraffin-embedded human Colon cancer. 1, Antibody was diluted at 1:200(4° overnight). 2, Tris-EDTA,pH9.0 was used for antigen retrieval. 3,Secondary antibody was diluted at 1:200(room temperature, 45min).