

## Rab L2A rabbit pAb

**Cat#: orb766169 (Manual)**

For research use only. Not intended for diagnostic use.

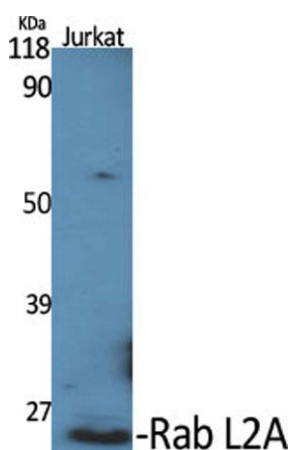
<b>Product Name</b>	Rab L2A rabbit pAb
<b>Host species</b>	Rabbit
<b>Applications</b>	WB;IHC;IF;ELISA
<b>Species Cross-Reactivity</b>	Human;Rat;Mouse;
<b>Recommended dilutions</b>	Western Blot: 1/500 - 1/2000. Immunohistochemistry: 1/100 - 1/300. ELISA: 1/20000. Not yet tested in other applications.
<b>Immunogen</b>	The antiserum was produced against synthesized peptide derived from human RABL2A. AA range:179-228
<b>Specificity</b>	Rab L2A Polyclonal Antibody detects endogenous levels of Rab L2A protein.
<b>Formulation</b>	Liquid in PBS containing 50% glycerol, 0.5% BSA and 0.02% sodium azide..
<b>Storage</b>	Store at -20°C. Avoid repeated freeze-thaw cycles.
<b>Protein Name</b>	Rab-like protein 2A
<b>Gene Name</b>	RABL2A
<b>Cellular localization</b>	intracellular,
<b>Purification</b>	The antibody was affinity-purified from rabbit antiserum by affinity-chromatography using epitope-specific immunogen.
<b>Clonality</b>	Polyclonal



<b>Concentration</b>	1 mg/ml
<b>Observed band</b>	30-34kD
<b>Human Gene ID</b>	11159
<b>Human Swiss-Prot Number</b>	Q9UBK7
<b>Alternative Names</b>	RABL2A; Rab-like protein 2A

### Background

This gene is a member of the RAB gene family which belongs to the RAS GTPase superfamily. The proteins in the family of RAS-related signaling molecules are small GTP-binding proteins that play important roles in the regulation of exocytotic and endocytotic pathways. This gene maps to the site of an ancestral telomere fusion event and may be a subtelomeric gene. Alternative splicing results in multiple transcript variants encoding different isoforms. [provided by RefSeq, Apr 2015],

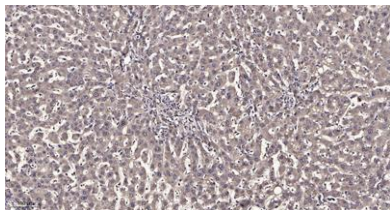


**Western Blot analysis of various cells using Rab L2A Polyclonal Antibody diluted at 1:500**



**Western Blot analysis of COLO205 cells using Rab L2A Polyclonal Antibody diluted at 1:500**





**Immunohistochemical analysis of paraffin-embedded human liver cancer. 1, Antibody was diluted at 1:200(4° overnight). 2, Tris-EDTA,pH9.0 was used for antigen retrieval. 3,Secondary antibody was diluted at 1:200(room temperature, 45min).**