

**PTP $\zeta$  rabbit pAb****Cat#: orb766156 (Manual)**

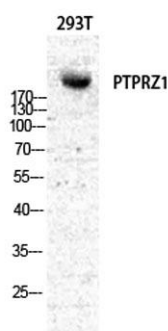
For research use only. Not intended for diagnostic use.

<b>Product Name</b>	PTP $\zeta$ rabbit pAb
<b>Host species</b>	Rabbit
<b>Applications</b>	WB;ELISA;IHC
<b>Species Cross-Reactivity</b>	Human;Mouse;Rat
<b>Recommended dilutions</b>	WB 1:500-2000;IHC-p 1:50-300; ELISA 2000-20000
<b>Immunogen</b>	The antiserum was produced against synthesized peptide derived from human PTPRZ1. AA range:122-171
<b>Specificity</b>	PTP $\zeta$ Polyclonal Antibody detects endogenous levels of PTP $\zeta$ protein.
<b>Formulation</b>	Liquid in PBS containing 50% glycerol, 0.5% BSA and 0.02% sodium azide..
<b>Storage</b>	Store at -20°C. Avoid repeated freeze-thaw cycles.
<b>Protein Name</b>	Receptor-type tyrosine-protein phosphatase zeta
<b>Gene Name</b>	PTPRZ1
<b>Cellular localization</b>	[Isoform 1]: Cell membrane; Single-pass type I membrane protein. Secreted . A secreted form is apparently generated by shedding of the extracellular domain. .; [Isoform 2]: Secreted .
<b>Purification</b>	The antibody was affinity-purified from rabbit antiserum by affinity-chromatography using epitope-specific immunogen.

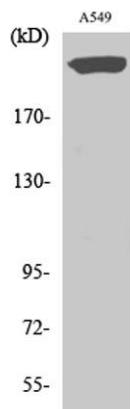
<b>Clonality</b>	Polyclonal
<b>Concentration</b>	1 mg/ml
<b>Observed band</b>	250kD
<b>Human Gene ID</b>	5803
<b>Human Swiss-Prot Number</b>	P23471
<b>Alternative Names</b>	PTPRZ1; HTPZP2; PTPRZ; PTPRZ2; PTPZ; Receptor-type tyrosine-protein phosphatase zeta; R-PTP-zeta; Protein-tyrosine phosphatase receptor type Z polypeptide 1; Protein-tyrosine phosphatase receptor type Z polypeptide 2; R-PTP-zeta-2

### Background

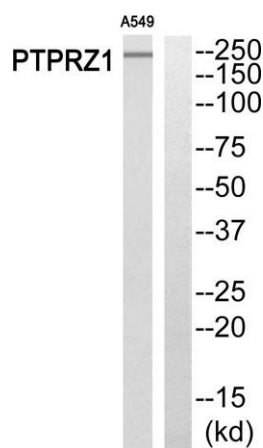
This gene encodes a member of the receptor protein tyrosine phosphatase family. Expression of this gene is restricted to the central nervous system (CNS), and it may be involved in the regulation of specific developmental processes in the CNS. Alternatively spliced transcript variants encoding different isoforms have been described for this gene. [provided by RefSeq, May 2011],



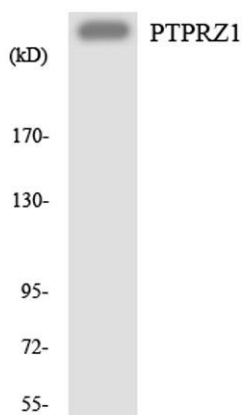
**Western Blot analysis of various cells using PTPZ Polyclonal Antibody diluted at 1:500**



**Western Blot analysis of A549 cells using PTP $\zeta$  Polyclonal Antibody diluted at 1:500**



**Western blot analysis of PTPRZ1 Antibody. The lane on the right is blocked with the PTPRZ1 peptide.**



**Western blot analysis of the lysates from HeLa cells using PTPRZ1 antibody.**