

PRSS33 rabbit pAb**Cat#: orb766140 (Manual)**

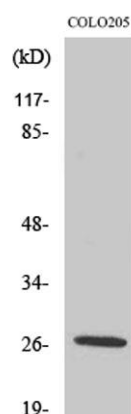
For research use only. Not intended for diagnostic use.

Product Name	PRSS33 rabbit pAb
Host species	Rabbit
Applications	WB;IHC;IF;ELISA
Species Cross-Reactivity	Human;Rat;Mouse;
Recommended dilutions	Western Blot: 1/500 - 1/2000. Immunohistochemistry: 1/100 - 1/300. ELISA: 1/10000. Not yet tested in other applications.
Immunogen	The antiserum was produced against synthesized peptide derived from human PRSS33. AA range:18-67
Specificity	PRSS33 Polyclonal Antibody detects endogenous levels of PRSS33 protein.
Formulation	Liquid in PBS containing 50% glycerol, 0.5% BSA and 0.02% sodium azide..
Storage	Store at -20°C. Avoid repeated freeze-thaw cycles.
Protein Name	Serine protease 33
Gene Name	PRSS33
Cellular localization	Secreted .
Purification	The antibody was affinity-purified from rabbit antiserum by affinity-chromatography using epitope-specific immunogen.
Clonality	Polyclonal

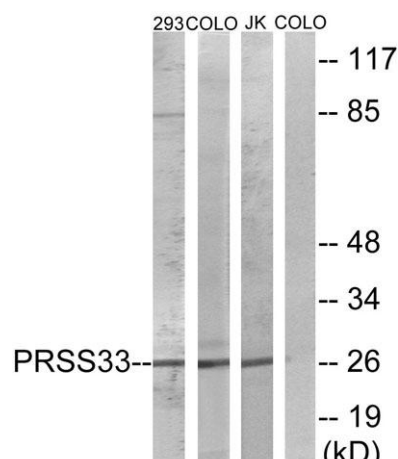
Concentration	1 mg/ml
Observed band	26kD
Human Gene ID	260429
Human Swiss-Prot Number	Q8NF86
Alternative Names	PRSS33; Serine protease 33; Serine protease EOS

Background

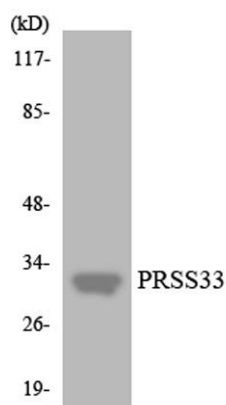
function: Serine protease that has amidolytic activity, cleaving its substrates before Arg residues., induction: Up-regulated by phorbol ester PMA., similarity: Belongs to the peptidase S1 family., similarity: Contains 1 peptidase S1 domain., tissue specificity: Predominantly expressed in macrophages. Present in the spleen, small and large intestine, lung and brain (at protein level). Highly expressed in peripheral leukocytes, ovary, retina, spleen and stomach. Moderately expressed in thymus, uterus and platelets, as well as some brain tissues, such as thalamus and fetal brain.,



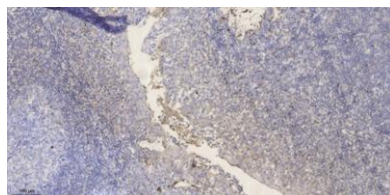
Western Blot analysis of various cells using PRSS33 Polyclonal Antibody



Western blot analysis of lysates from COLO, 293, and Jurkat cells, using PRSS33 Antibody. The lane on the right is blocked with the synthesized peptide.



Western blot analysis of the lysates from HT-29 cells using PRSS33 antibody.



Immunohistochemical analysis of paraffin-embedded human tonsil. 1, Antibody was diluted at 1:200(4° overnight). 2, Tris-EDTA,pH9.0 was used for antigen retrieval. 3,Secondary antibody was diluted at 1:200(room temperature, 30min).