

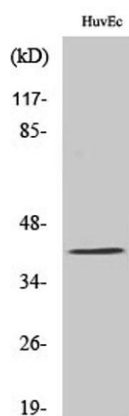
PRDM12 rabbit pAb**Cat#: orb766133 (Manual)**

For research use only. Not intended for diagnostic use.

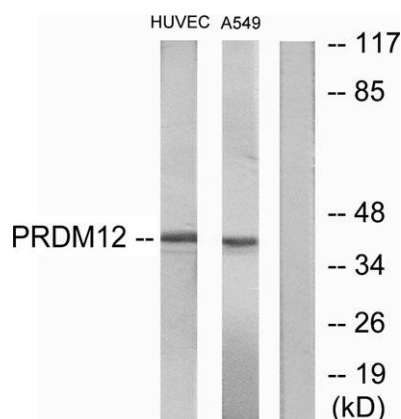
Product Name	PRDM12 rabbit pAb
Host species	Rabbit
Applications	IF;ELISA;IHC
Species Cross-Reactivity	Human;Mouse
Recommended dilutions	IF/ICC 1:50-300; ELISA 1:2000-20000; IHC-p 1:50-200
Immunogen	The antiserum was produced against synthesized peptide derived from human PRDM12. AA range:191-240
Specificity	PRDM12 Polyclonal Antibody detects endogenous levels of PRDM12 protein.
Formulation	Liquid in PBS containing 50% glycerol, 0.5% BSA and 0.02% sodium azide..
Storage	Store at -20°C. Avoid repeated freeze-thaw cycles.
Protein Name	PR domain zinc finger protein 12
Gene Name	PRDM12
Cellular localization	Nucleus .
Purification	The antibody was affinity-purified from rabbit antiserum by affinity-chromatography using epitope-specific immunogen.
Clonality	Polyclonal

Concentration	1 mg/ml
Observed band	40kD
Human Gene ID	59335
Human Swiss-Prot Number	Q9H4Q4
Alternative Names	PRDM12; PFM9; PR domain zinc finger protein 12; PR domain-containing protein 12

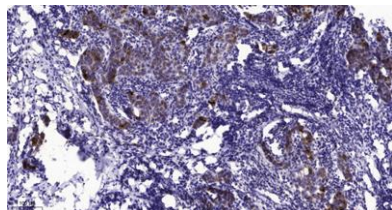
Background function:May be involved in transcriptional regulation.,similarity:Contains 1 SET domain.,similarity:Contains 3 C2H2-type zinc fingers.,



Western Blot analysis of various cells using PRDM12 Polyclonal Antibody cells nucleus extracted by Minute TM Cytoplasmic and Nuclear Fractionation kit (SC-003, Invent biotech, MN, USA).



Western blot analysis of lysates from HUVEC and A549 cells, using PRDM12 Antibody. The lane on the right is blocked with the synthesized peptide.



Immunohistochemical analysis of paraffin-embedded human Breast cancer. 1, Antibody was diluted at 1:200(4° overnight). 2, Tris-EDTA,pH9.0 was used for antigen retrieval. 3,Secondary antibody was diluted at 1:200(room temperature, 45min).