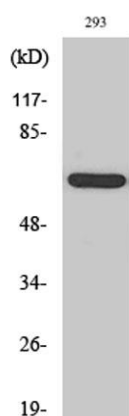


POTE14/22 rabbit pAb**Cat#: orb766121 (Manual)**

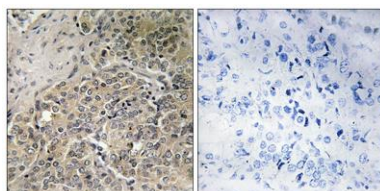
For research use only. Not intended for diagnostic use.

Product Name	POTE14/22 rabbit pAb
Host species	Rabbit
Applications	WB;IHC;IF;ELISA
Species Cross-Reactivity	Human;Rat;Mouse;
Recommended dilutions	Western Blot: 1/500 - 1/2000. Immunohistochemistry: 1/100 - 1/300. ELISA: 1/40000. Not yet tested in other applications.
Immunogen	The antiserum was produced against synthesized peptide derived from human POTE _G . AA range:401-450
Specificity	POTE14/22 Polyclonal Antibody detects endogenous levels of POTE14/22 protein.
Formulation	Liquid in PBS containing 50% glycerol, 0.5% BSA and 0.02% sodium azide..
Storage	Store at -20°C. Avoid repeated freeze-thaw cycles.
Protein Name	POTE ankyrin domain family member G
Gene Name	POTE _G
Cellular localization	
Purification	The antibody was affinity-purified from rabbit antiserum by affinity-chromatography using epitope-specific immunogen.
Clonality	Polyclonal

Concentration	1 mg/ml
Observed band	67kD
Human Gene ID	404785/23784
Human Swiss-Prot Number	Q6S5H5/Q6S545/A6NI47
Alternative Names	POTEG; A26C2; POTE14; POTE ankyrin domain family member G; ANKRD26-like family C member 2; Prostate; ovary, testis-expressed protein on chromosome 14; POTE-14; POTEH; A26C3; ACTBL1; POTE22; POTE ankyrin domain family member H; ANKRD26-like
Background	similarity:Belongs to the POTE family.,similarity:Contains 5 ANK repeats.,



Western Blot analysis of various cells using POTE14/22 Polyclonal Antibody



Immunohistochemistry analysis of paraffin-embedded human prostate carcinoma, using A26C2/3 Antibody. The picture on the right is blocked with the synthesized peptide.