

## PKA I $\beta$ reg rabbit pAb

**Cat#: orb766094 (Manual)**

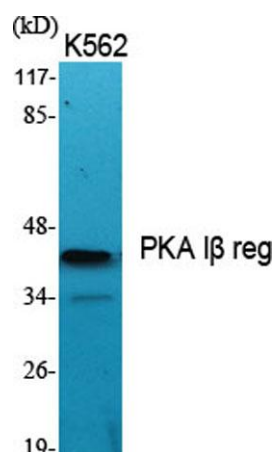
For research use only. Not intended for diagnostic use.

<b>Product Name</b>	PKA I $\beta$ reg rabbit pAb
<b>Host species</b>	Rabbit
<b>Applications</b>	WB;IHC;IF;ELISA
<b>Species Cross-Reactivity</b>	Human;Mouse;Rat
<b>Recommended dilutions</b>	Western Blot: 1/500 - 1/2000. Immunohistochemistry: 1/100 - 1/300. ELISA: 1/20000. Not yet tested in other applications.
<b>Immunogen</b>	The antiserum was produced against synthesized peptide derived from human KAP1. AA range:106-155
<b>Specificity</b>	PKA I $\beta$ reg Polyclonal Antibody detects endogenous levels of PKA I $\beta$ reg protein.
<b>Formulation</b>	Liquid in PBS containing 50% glycerol, 0.5% BSA and 0.02% sodium azide..
<b>Storage</b>	Store at -20°C. Avoid repeated freeze-thaw cycles.
<b>Protein Name</b>	cAMP-dependent protein kinase type I-beta regulatory subunit
<b>Gene Name</b>	PRKAR1B
<b>Cellular localization</b>	Cell membrane .
<b>Purification</b>	The antibody was affinity-purified from rabbit antiserum by affinity-chromatography using epitope-specific immunogen.
<b>Clonality</b>	Polyclonal

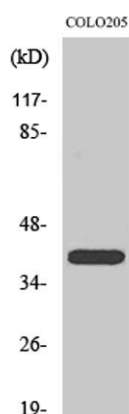
<b>Concentration</b>	1 mg/ml
<b>Observed band</b>	43kD
<b>Human Gene ID</b>	5575
<b>Human Swiss-Prot Number</b>	P31321
<b>Alternative Names</b>	PRKAR1B; cAMP-dependent protein kinase type I-beta regulatory subunit

### Background

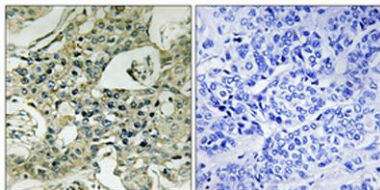
The protein encoded by this gene is a regulatory subunit of cyclic AMP-dependent protein kinase A (PKA), which is involved in the signaling pathway of the second messenger cAMP. Two regulatory and two catalytic subunits form the PKA holoenzyme, disbands after cAMP binding. The holoenzyme is involved in many cellular events, including ion transport, metabolism, and transcription. Several transcript variants encoding the same protein have been found for this gene. [provided by RefSeq, Aug 2015],



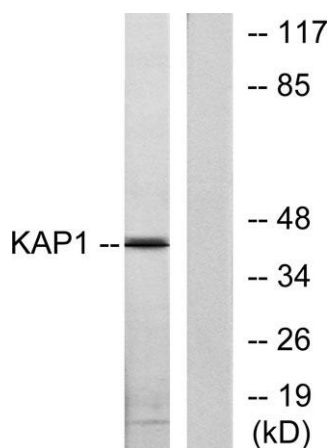
Western Blot analysis of various cells using PKA Iβ reg Polyclonal Antibody



Western Blot analysis of COLO205 cells using PKA Iβ reg Polyclonal Antibody



**Immunohistochemical analysis of paraffin-embedded Human breast cancer. Antibody was diluted at 1:100(4° overnight). High-pressure and temperature Tris-EDTA,pH8.0 was used for antigen retrieval. Negative contrl (right) obtained from antibody was pre-absorbed by immunogen peptide.**



**Western blot analysis of lysates from COLO205 cells, using KAP1 Antibody. The lane on the right is blocked with the synthesized peptide.**