

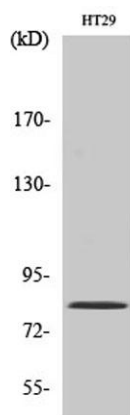
## Pinin rabbit pAb

**Cat#: orb766085 (Manual)**

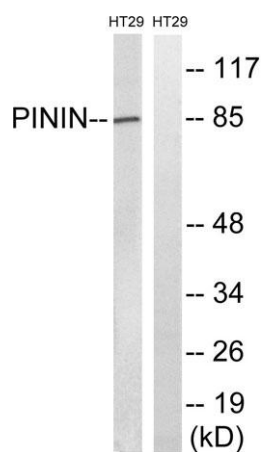
For research use only. Not intended for diagnostic use.

<b>Product Name</b>	Pinin rabbit pAb
<b>Host species</b>	Rabbit
<b>Applications</b>	WB;IHC
<b>Species Cross-Reactivity</b>	Human;Mouse
<b>Recommended dilutions</b>	WB 1:500-2000;IHC-p 1:50-300
<b>Immunogen</b>	The antiserum was produced against synthesized peptide derived from human PNN. AA range:211-260
<b>Specificity</b>	Pinin Polyclonal Antibody detects endogenous levels of Pinin protein.
<b>Formulation</b>	Liquid in PBS containing 50% glycerol, 0.5% BSA and 0.02% sodium azide..
<b>Storage</b>	Store at -20°C. Avoid repeated freeze-thaw cycles.
<b>Protein Name</b>	Pinin
<b>Gene Name</b>	PNN
<b>Cellular localization</b>	Nucleus speckle. Cell junction, desmosome. Cell-cell contact area, predominantly desmosome of intercellular adherens junction. Not a nucleocytoplasmic shuttling protein.
<b>Purification</b>	The antibody was affinity-purified from rabbit antiserum by affinity-chromatography using epitope-specific immunogen.

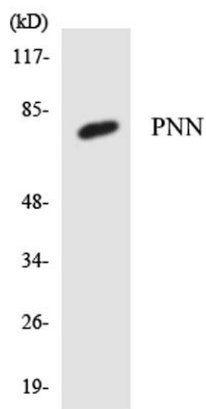
<b>Clonality</b>	Polyclonal
<b>Concentration</b>	1 mg/ml
<b>Observed band</b>	85kD
<b>Human Gene ID</b>	5411
<b>Human Swiss-Prot Number</b>	Q9H307
<b>Alternative Names</b>	PNN; DRS; MEMA; Pinin; 140 kDa nuclear and cell adhesion-related phosphoprotein; Desmosome-associated protein; Domain-rich serine protein; DRS protein; DRSP; Melanoma metastasis clone A protein; Nuclear protein SDK3; SR-like protein
<b>Background</b>	<p>function:Transcriptional activator binding to the E-box 1 core sequence of the E-cadherin promoter gene; the core-binding sequence is 5'CAGGTG-3'. Capable of reversing CTBP1-mediated transcription repression. Also participates in the regulation of alternative pre-mRNA splicing. Associates to spliced mRNA within 60 nt upstream of the 5'-splice sites. Involved in the establishment and maintenance of epithelia cell-cell adhesion. Potential tumor suppressor for renal cell carcinoma.,PTM:Phosphorylated upon DNA damage, probably by ATM or ATR.,similarity:Belongs to the pinin family.,subcellular location:Cell-cell contact area, predominantly desmosome of intercellular adherens junction. Not a nucleocytoplasmic shuttling protein.,subunit:Found in a complex with SR proteins. Found in a mRNP complex with RNPS1. Interacts with C6orf111/SRRP130, CTBP1, CTBP2, KRT8, KRT18, KRT19, PS1D/PNO40, PPIG, RNPS1, SFRS4 and SRRM2. Identified in the spliceosome C complex, at least composed of AQR, ASCC3L1, C19orf29, CDC40, CDC5L, CRNKL1, DDX23, DDX41, DDX48, DDX5, DGCR14, DHX35, DHX38, DHX8, EFTUD2, FRG1, GPATC1, HNRPA1, HNRPA2B1, HNRPA3, HNRPC, HNRPF, HNRPH1, HNRPK, HNRPM, HNRPR, HNRPU, KIAA1160, KIAA1604, LSM2, LSM3, MAGOH, MORG1, PABPC1, PLRG1, PNN, PPIE, PPIL1, PPIL3, PPWD1, PRPF19, PRPF4B, PRPF6, PRPF8, RALY, RBM22, RBM8A, RBMX, SART1, SF3A1, SF3A2, SF3A3, SF3B1, SF3B2, SF3B3, SFRS1, SKIV2L2, SNRPA1, SNRPB, SNRPB2, SNRPD1, SNRPD2, SNRPD3, SNRPE, SNRPF, SNRPG, SNW1, SRRM1, SRRM2, SYF2, SYNCRIP, TFIP11, THOC4, U2AF1, WDR57, XAB2 and ZCCHC8.,tissue specificity:Expressed in placenta, lung, liver, kidney, pancreas, spleen, thymus, prostate, testis, ovary, small intestine, colon, heart, epidermis, esophagus, brain and smooth and skeletal muscle. Expressed strongly in melanoma metastasis lesions and advanced primary tumors.,</p>



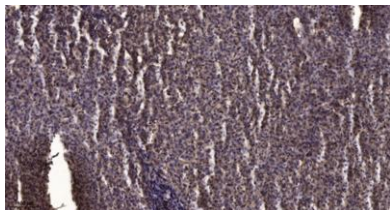
**Western Blot analysis of various cells using Pinin Polyclonal Antibody**



**Western blot analysis of lysates from HT-29 cells, using PNN Antibody. The lane on the right is blocked with the synthesized peptide.**



**Western blot analysis of the lysates from K562 cells using PNN antibody.**



**Immunohistochemical analysis of paraffin-embedded human liver cancer. 1, Antibody was diluted at 1:200(4° overnight). 2, Tris-EDTA,pH9.0 was used for antigen retrieval. 3,Secondary antibody was diluted at 1:200(room temperature, 45min).**