

PIG-X rabbit pAb

Cat#: orb766084 (Manual)

For research use only. Not intended for diagnostic use.

Product Name	PIG-X rabbit pAb
Host species	Rabbit
Applications	WB;IHC;IF;ELISA
Species Cross-Reactivity	Human;Rat;Mouse;
Recommended dilutions	Western Blot: 1/500 - 1/2000. Immunohistochemistry: 1/100 - 1/300. ELISA: 1/40000. Not yet tested in other applications.
Immunogen	The antiserum was produced against synthesized peptide derived from human PIGX. AA range:183-232
Specificity	PIG-X Polyclonal Antibody detects endogenous levels of PIG-X protein.
Formulation	Liquid in PBS containing 50% glycerol, 0.5% BSA and 0.02% sodium azide..
Storage	Store at -20°C. Avoid repeated freeze-thaw cycles.
Protein Name	Phosphatidylinositol-glycan biosynthesis class X protein
Gene Name	PIGX
Cellular localization	Endoplasmic reticulum membrane ; Single-pass type I membrane protein .
Purification	The antibody was affinity-purified from rabbit antiserum by affinity-chromatography using epitope-specific immunogen.
Clonality	Polyclonal

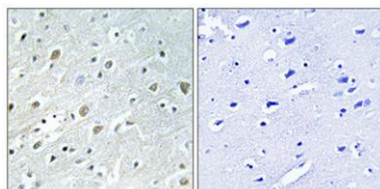
Concentration	1 mg/ml
Observed band	26kD
Human Gene ID	54965
Human Swiss-Prot Number	Q8TBF5
Alternative Names	PIGX; Phosphatidylinositol-glycan biosynthesis class X protein; PIG-X

Background

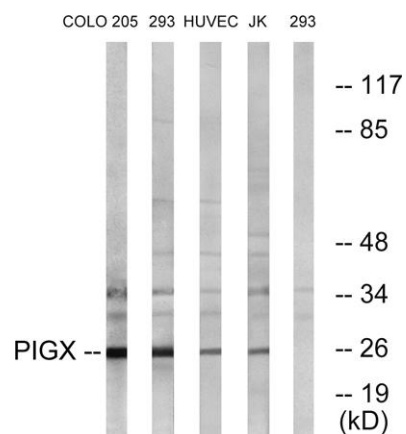
This gene encodes a type I transmembrane protein in the endoplasmic reticulum (ER). The protein is an essential component of glycosylphosphatidylinositol-mannosyltransferase I, which transfers the first of the four mannoses in the GPI-anchor precursors during GPI-anchor biosynthesis. Studies in rat indicate that the protein is translated from a non-AUG translation initiation site. Alternative splicing results in multiple transcript variants. [provided by RefSeq, Oct 2009],



Western Blot analysis of various cells using PIG-X Polyclonal Antibody diluted at 1:1000



Immunohistochemical analysis of paraffin-embedded Human brain. Antibody was diluted at 1:100 (4° overnight). High-pressure and temperature Tris-EDTA, pH 8.0 was used for antigen retrieval. Negative control (right) obtained from antibody was pre-absorbed by i



Western blot analysis of lysates from 293, COLO, HUVEC, and Jurkat cells, using PIGX Antibody. The lane on the right is blocked with the synthesized peptide.