

**pICln rabbit pAb****Cat#: orb766081 (Manual)**

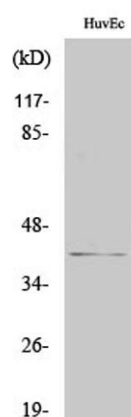
For research use only. Not intended for diagnostic use.

<b>Product Name</b>	pICln rabbit pAb
<b>Host species</b>	Rabbit
<b>Applications</b>	WB;ELISA;IHC
<b>Species Cross-Reactivity</b>	Human;Rat;Mouse;
<b>Recommended dilutions</b>	WB 1:500-2000;IHC-p 1:50-300; ELISA 2000-20000
<b>Immunogen</b>	The antiserum was produced against synthesized peptide derived from human CLNS1A. AA range:184-233
<b>Specificity</b>	pICln Polyclonal Antibody detects endogenous levels of pICln protein.
<b>Formulation</b>	Liquid in PBS containing 50% glycerol, 0.5% BSA and 0.02% sodium azide..
<b>Storage</b>	Store at -20°C. Avoid repeated freeze-thaw cycles.
<b>Protein Name</b>	Methylosome subunit pICln
<b>Gene Name</b>	CLNS1A
<b>Cellular localization</b>	Cytoplasm, cytosol . Nucleus . Cytoplasm, cytoskeleton . A small fraction is also associated with the cytoskeleton (PubMed:18984161).
<b>Purification</b>	The antibody was affinity-purified from rabbit antiserum by affinity-chromatography using      epitope-specific immunogen.
<b>Clonality</b>	Polyclonal

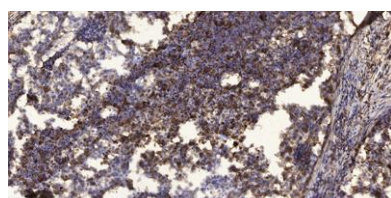
<b>Concentration</b>	1 mg/ml
<b>Observed band</b>	37kD
<b>Human Gene ID</b>	1207
<b>Human Swiss-Prot Number</b>	P54105
<b>Alternative Names</b>	CLNS1A; CLCI; ICLN; Methylosome subunit pICln; Chloride channel; nucleotide sensitive 1A; Chloride conductance regulatory protein ICln; I(Cln); Chloride ion current inducer protein; ClCI; Reticulocyte pICln

**Background**

This gene encodes a protein that functions in multiple regulatory pathways. The encoded protein complexes with numerous cytosolic proteins and performs diverse functions including regulation of small nuclear ribonucleoprotein biosynthesis, platelet activation and cytoskeletal organization. The protein is also found associated with the plasma membrane where it functions as a chloride current regulator. Pseudogenes of this gene are found on chromosomes 1, 4 and 6. Several transcript variants encoding different isoforms have been found for this gene. [provided by RefSeq, Jul 2015],



**Western Blot analysis of various cells using pICln Polyclonal Antibody**



**Immunohistochemical analysis of paraffin-embedded human Squamous cell carcinoma of lung.** 1, Antibody was diluted at 1:200(4° overnight). 2, Tris-EDTA,pH9.0 was used for antigen retrieval. 3,Secondary antibody was diluted at 1:200(room temperature, 45min).



Explore. Bioreagents.

[www.biorbyt.com](http://www.biorbyt.com)

Biorbyt Ltd  
7 Signet Court, Swann Road, Cambridge, CB5 8LA. United Kingdom  
Email: [info@biorbyt.com](mailto:info@biorbyt.com) | Phone: +44 (0)1223 859-353 | Fax: +44 (0)1223 280-240

Biorbyt LLC  
68 TW Alexander Drive, Durham, NC 27709. United States  
Email: [info@biorbyt.com](mailto:info@biorbyt.com) | Phone: +1 (415) 906-5211 | Fax: +1 (415) 651-8558