

PI-9 rabbit pAb**Cat#: orb766077 (Manual)**

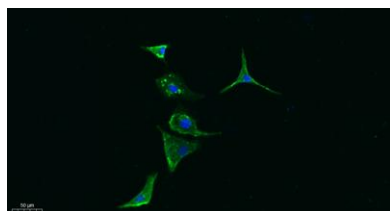
For research use only. Not intended for diagnostic use.

Product Name	PI-9 rabbit pAb
Host species	Rabbit
Applications	WB;IHC;IF;ELISA
Species Cross-Reactivity	Human;Mouse;Rat
Recommended dilutions	Western Blot: 1/500 - 1/2000. IHC-p: 1:100-300 ELISA: 1/20000. IF 1:100-300 Not yet tested in other applications.
Immunogen	The antiserum was produced against synthesized peptide derived from human SERPINB9. AA range:241-290
Specificity	PI-9 Polyclonal Antibody detects endogenous levels of PI-9 protein.
Formulation	Liquid in PBS containing 50% glycerol, 0.5% BSA and 0.02% sodium azide..
Storage	Store at -20°C. Avoid repeated freeze-thaw cycles.
Protein Name	Serpin B9
Gene Name	SERPINB9
Cellular localization	Cytoplasm.
Purification	The antibody was affinity-purified from rabbit antiserum by affinity-chromatography using epitope-specific immunogen.
Clonality	Polyclonal

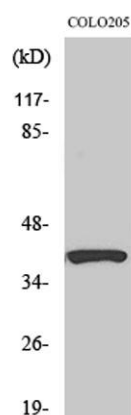
Concentration	1 mg/ml
Observed band	40kD
Human Gene ID	5272
Human Swiss-Prot Number	P50453
Alternative Names	SERPINB9; PI9; Serpin B9; Cytoplasmic antiproteinase 3; CAP-3; CAP3; Peptidase inhibitor 9; PI-9

Background

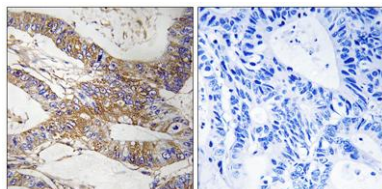
This gene encodes a member of the serine protease inhibitor family which are also known as serpins. The encoded protein belongs to a subfamily of intracellular serpins. This protein inhibits the activity of the effector molecule granzyme B. Overexpression of this protein may prevent cytotoxic T-lymphocytes from eliminating certain tumor cells. A pseudogene of this gene is found on chromosome 6. [provided by RefSeq, Mar 2012],



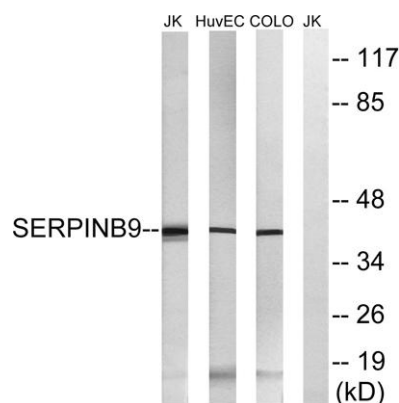
Immunofluorescence analysis of A549. 1,primary Antibody was diluted at 1:200(4°C overnight). 2, Goat Anti Rabbit IgG (H&L) - Alexa Fluor 488 Secondary antibody was diluted at 1:1000(room temperature, 50min).3, Picture B: DAPI(blue) 10min.



Western Blot analysis of various cells using PI-9 Polyclonal Antibody diluted at 1:1000



Immunohistochemistry analysis of paraffin-embedded human colon carcinoma tissue, using SERPINB9 Antibody. The picture on the right is blocked with the synthesized peptide.



Western blot analysis of lysates from COLO, HUVEC, and Jurkat cells, using SERPINB9 Antibody. The lane on the right is blocked with the synthesized peptide.