

## PGRMC2 rabbit pAb

**Cat#: orb766065 (Manual)**

For research use only. Not intended for diagnostic use.

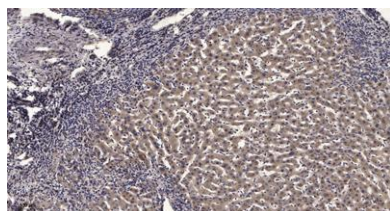
<b>Product Name</b>	PGRMC2 rabbit pAb
<b>Host species</b>	Rabbit
<b>Applications</b>	WB;ELISA;IHC
<b>Species Cross-Reactivity</b>	Human;Mouse;Rat
<b>Recommended dilutions</b>	WB 1:500-2000;IHC-p 1:50-300; ELISA 2000-20000
<b>Immunogen</b>	The antiserum was produced against synthesized peptide derived from human PGRMC2. AA range:174-223
<b>Specificity</b>	PGRMC2 Polyclonal Antibody detects endogenous levels of PGRMC2 protein.
<b>Formulation</b>	Liquid in PBS containing 50% glycerol, 0.5% BSA and 0.02% sodium azide..
<b>Storage</b>	Store at -20°C. Avoid repeated freeze-thaw cycles.
<b>Protein Name</b>	Membrane-associated progesterone receptor component 2
<b>Gene Name</b>	PGRMC2
<b>Cellular localization</b>	Membrane ; Single-pass membrane protein . Nucleus envelope . Endoplasmic reticulum .
<b>Purification</b>	The antibody was affinity-purified from rabbit antiserum by affinity-chromatography using epitope-specific immunogen.
<b>Clonality</b>	Polyclonal

<b>Concentration</b>	1 mg/ml
<b>Observed band</b>	25kD
<b>Human Gene ID</b>	10424
<b>Human Swiss-Prot Number</b>	O15173
<b>Alternative Names</b>	PGRMC2; DG6; PMBP; Membrane-associated progesterone receptor component 2; Progesterone membrane-binding protein; Steroid receptor protein DG6

**Background** domain:The cytochrome b5 heme-binding domain lacks the conserved iron-binding His residues at positions 137 and 161.,function:Receptor for steroids.,similarity:Belongs to the cytochrome b5 family. MAPR subfamily.,similarity:Contains 1 cytochrome b5 heme-binding domain.,



**Western Blot analysis of various cells using PGRMC2 Polyclonal Antibody diluted at 1:1000**



**Immunohistochemical analysis of paraffin-embedded human liver cancer. 1, Antibody was diluted at 1:200(4° overnight). 2, Tris-EDTA,pH9.0 was used for antigen retrieval. 3,Secondary antibody was diluted at 1:200(room temperature, 45min).**