

PFK-2 liv/tes rabbit pAb**Cat#: orb766059 (Manual)**

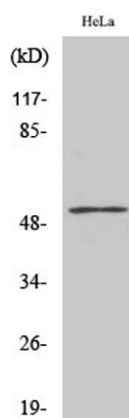
For research use only. Not intended for diagnostic use.

Product Name	PFK-2 liv/tes rabbit pAb
Host species	Rabbit
Applications	WB;ELISA;IHC
Species Cross-Reactivity	Human;Mouse;Rat
Recommended dilutions	WB 1:500-2000;IHC-p 1:50-300; ELISA 2000-20000
Immunogen	The antiserum was produced against synthesized peptide derived from human PFKFB1/4. AA range:331-380
Specificity	PFK-2 liv/tes Polyclonal Antibody detects endogenous levels of PFK-2 liv/tes protein.
Formulation	Liquid in PBS containing 50% glycerol, 0.5% BSA and 0.02% sodium azide..
Storage	Store at -20°C. Avoid repeated freeze-thaw cycles.
Protein Name	6-phosphofructo-2-kinase/fructose-2,6-biphosphatase 1/4
Gene Name	PFKFB1/PFKFB4
Cellular localization	cytosol,6-phosphofructo-2-kinase/fructose-2,6-biphosphatase complex,
Purification	The antibody was affinity-purified from rabbit antiserum by affinity-chromatography using epitope-specific immunogen.
Clonality	Polyclonal

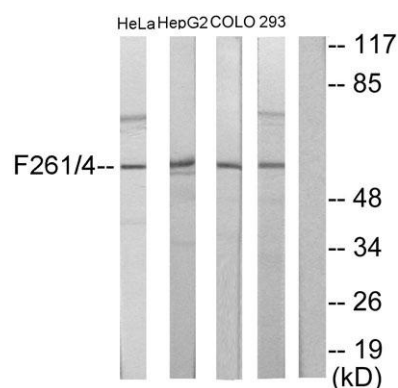
Concentration	1 mg/ml
Observed band	54kD
Human Gene ID	5207/5210
Human Swiss-Prot Number	P16118/Q16877
Alternative Names	PFKFB1; F6PK; PFRX; 6-phosphofructo-2-kinase/fructose-2,6-bisphosphatase 1; 6PF-2-K/Fru-2,6-P2ase 1; PFK/FBPase 1; 6PF-2-K/Fru-2,6-P2ase liver isozyme; PFKFB4; 6-phosphofructo-2-kinase/fructose-2,6-bisphosphatase 4; 6PF-2-K/Fru-2,6-P2ase 4;

Background

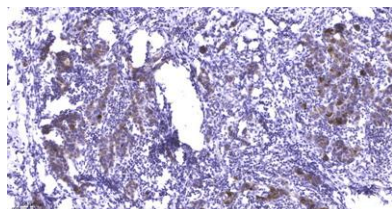
This gene encodes a member of the family of bifunctional 6-phosphofructo-2-kinase:fructose-2,6-bisphosphatase enzymes. The enzyme forms a homodimer that catalyzes both the synthesis and degradation of fructose-2,6-bisphosphate using independent catalytic domains. Fructose-2,6-bisphosphate is an activator of the glycolysis pathway and an inhibitor of the gluconeogenesis pathway. Consequently, regulating fructose-2,6-bisphosphate levels through the activity of this enzyme is thought to regulate glucose homeostasis. Multiple alternatively spliced transcript variants have been found for this gene. [provided by RefSeq, Nov 2012],



Western Blot analysis of various cells using PFK-2 liv/tes Polyclonal Antibody



Western blot analysis of lysates from HeLa, HepG2, COLO205, and 293 cells, using PFKFB1/4 Antibody. The lane on the right is blocked with the synthesized peptide.



Immunohistochemical analysis of paraffin-embedded human Breast cancer. 1, Antibody was diluted at 1:200(4° overnight). 2, Tris-EDTA,pH9.0 was used for antigen retrieval. 3,Secondary antibody was diluted at 1:200(room temperature, 45min).