

PFK-2 liv rabbit pAb**Cat#: orb766058 (Manual)**

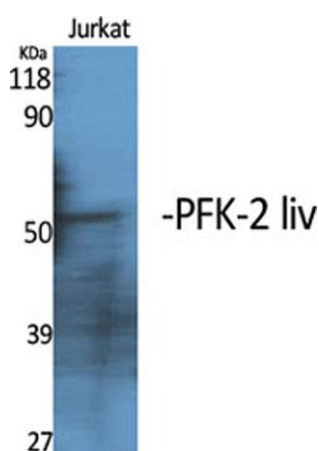
For research use only. Not intended for diagnostic use.

Product Name	PFK-2 liv rabbit pAb
Host species	Rabbit
Applications	WB;IHC;IF;ELISA
Species Cross-Reactivity	Human;Mouse;Rat
Recommended dilutions	Western Blot: 1/500 - 1/2000. Immunohistochemistry: 1/100 - 1/300. ELISA: 1/5000. Not yet tested in other applications.
Immunogen	The antiserum was produced against synthesized peptide derived from human PFKFB1. AA range:406-455
Specificity	PFK-2 liv Polyclonal Antibody detects endogenous levels of PFK-2 liv protein.
Formulation	Liquid in PBS containing 50% glycerol, 0.5% BSA and 0.02% sodium azide..
Storage	Store at -20°C. Avoid repeated freeze-thaw cycles.
Protein Name	6-phosphofructo-2-kinase/fructose-2,6-bisphosphatase 1
Gene Name	PFKFB1
Cellular localization	cytosol,6-phosphofructo-2-kinase/fructose-2,6-biphosphatase complex,
Purification	The antibody was affinity-purified from rabbit antiserum by affinity-chromatography using epitope-specific immunogen.
Clonality	Polyclonal

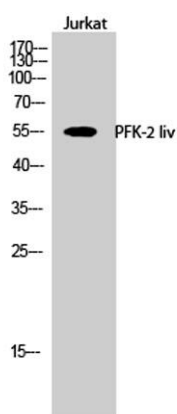
Concentration	1 mg/ml
Observed band	58kD
Human Gene ID	5207
Human Swiss-Prot Number	P16118
Alternative Names	PFKFB1; F6PK; PFRX; 6-phosphofructo-2-kinase/fructose-2,6-bisphosphatase 1; 6PF-2-K/Fru-2,6-P2ase 1; PFK/FBPase 1; 6PF-2-K/Fru-2,6-P2ase liver isozyme

Background

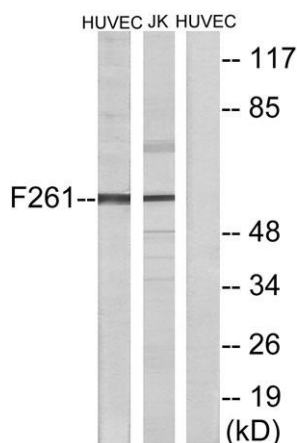
This gene encodes a member of the family of bifunctional 6-phosphofructo-2-kinase:fructose-2,6-biphosphatase enzymes. The enzyme forms a homodimer that catalyzes both the synthesis and degradation of fructose-2,6-biphosphate using independent catalytic domains. Fructose-2,6-biphosphate is an activator of the glycolysis pathway and an inhibitor of the gluconeogenesis pathway. Consequently, regulating fructose-2,6-biphosphate levels through the activity of this enzyme is thought to regulate glucose homeostasis. Multiple alternatively spliced transcript variants have been found for this gene. [provided by RefSeq, Nov 2012],



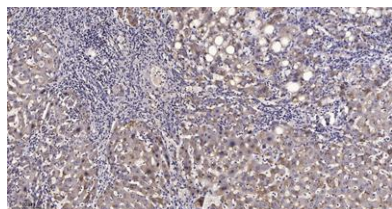
Western Blot analysis of various cells using PFK-2 liv Polyclonal Antibody



Western Blot analysis of Jurkat cells using PFK-2 liv Polyclonal Antibody



Western blot analysis of lysates from HUVEC cells and Jurkat cells, using PFKFB1 Antibody. The lane on the right is blocked with the synthesized peptide.



Immunohistochemical analysis of paraffin-embedded human liver cancer. 1, Antibody was diluted at 1:200(4° overnight). 2, Tris-EDTA,pH9.0 was used for antigen retrieval. 3,Secondary antibody was diluted at 1:200(room temperature, 45min).