

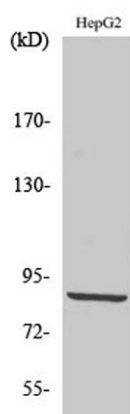
PDXDC1 rabbit pAb**Cat#: orb766047 (Manual)**

For research use only. Not intended for diagnostic use.

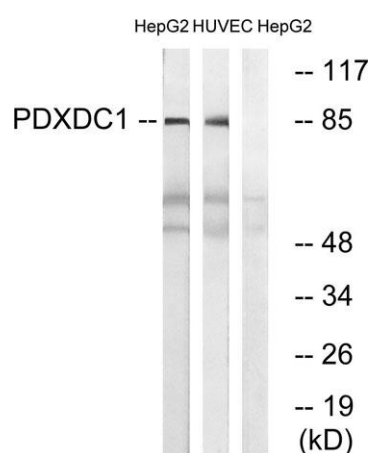
Product Name	PDXDC1 rabbit pAb
Host species	Rabbit
Applications	WB;IHC;IF;ELISA
Species Cross-Reactivity	Human;Mouse;Rat
Recommended dilutions	Western Blot: 1/500 - 1/2000. Immunohistochemistry: 1/100 - 1/300. ELISA: 1/10000. Not yet tested in other applications.
Immunogen	The antiserum was produced against synthesized peptide derived from human PDXDC1. AA range:677-726
Specificity	PDXDC1 Polyclonal Antibody detects endogenous levels of PDXDC1 protein.
Formulation	Liquid in PBS containing 50% glycerol, 0.5% BSA and 0.02% sodium azide..
Storage	Store at -20°C. Avoid repeated freeze-thaw cycles.
Protein Name	Pyridoxal-dependent decarboxylase domain-containing protein 1
Gene Name	PDXDC1
Cellular localization	Golgi apparatus,cell-cell adherens junction,intracellular membrane-bounded organelle,
Purification	The antibody was affinity-purified from rabbit antiserum by affinity-chromatography using epitope-specific immunogen.
Clonality	Polyclonal

Concentration	1 mg/ml
Observed band	87kD
Human Gene ID	23042
Human Swiss-Prot Number	Q6P996
Alternative Names	PDXDC1; KIAA0251; Pyridoxal-dependent decarboxylase domain-containing protein 1

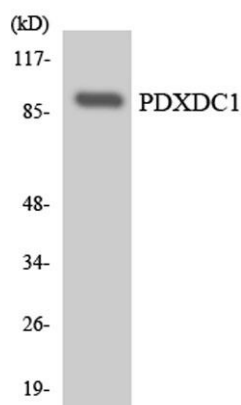
Background cofactor:Pyridoxal phosphate.,PTM:Phosphorylated upon DNA damage, probably by ATM or ATR.,similarity:Belongs to the group II decarboxylase family.,



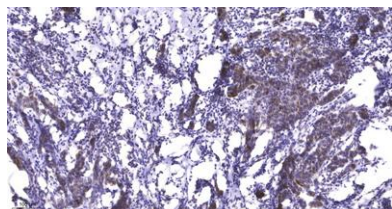
Western Blot analysis of various cells using PDXDC1 Polyclonal Antibody



Western blot analysis of lysates from HepG2 and HUVEC cells, using PDXDC1 Antibody. The lane on the right is blocked with the synthesized peptide.



Western blot analysis of the lysates from HeLa cells using PDXDC1 antibody.



Immunohistochemical analysis of paraffin-embedded human Breast cancer. 1, Antibody was diluted at 1:200(4° overnight). 2, Tris-EDTA,pH9.0 was used for antigen retrieval. 3,Secondary antibody was diluted at 1:200(room temperature, 45min).