

**PDRG1 rabbit pAb****Cat#: orb766046 (Manual)**

For research use only. Not intended for diagnostic use.

<b>Product Name</b>	PDRG1 rabbit pAb
<b>Host species</b>	Rabbit
<b>Applications</b>	WB;IHC;IF;ELISA
<b>Species Cross-Reactivity</b>	Human;Mouse;Rat
<b>Recommended dilutions</b>	Western Blot: 1/500 - 1/2000. Immunohistochemistry: 1/100 - 1/300. ELISA: 1/40000. Not yet tested in other applications.
<b>Immunogen</b>	The antiserum was produced against synthesized peptide derived from human PDRG1. AA range:58-107
<b>Specificity</b>	PDRG1 Polyclonal Antibody detects endogenous levels of PDRG1 protein.
<b>Formulation</b>	Liquid in PBS containing 50% glycerol, 0.5% BSA and 0.02% sodium azide..
<b>Storage</b>	Store at -20°C. Avoid repeated freeze-thaw cycles.
<b>Protein Name</b>	p53 and DNA damage-regulated protein 1
<b>Gene Name</b>	PDRG1
<b>Cellular localization</b>	Cytoplasm .
<b>Purification</b>	The antibody was affinity-purified from rabbit antiserum by affinity-chromatography using epitope-specific immunogen.
<b>Clonality</b>	Polyclonal

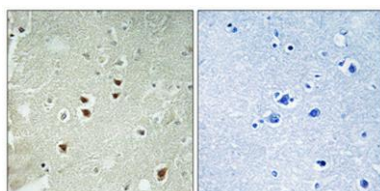
<b>Concentration</b>	1 mg/ml
<b>Observed band</b>	19kD
<b>Human Gene ID</b>	81572
<b>Human Swiss-Prot Number</b>	Q9NUG6
<b>Alternative Names</b>	PDRG1; C20orf126; PDRG; p53 and DNA damage-regulated protein 1

## Background

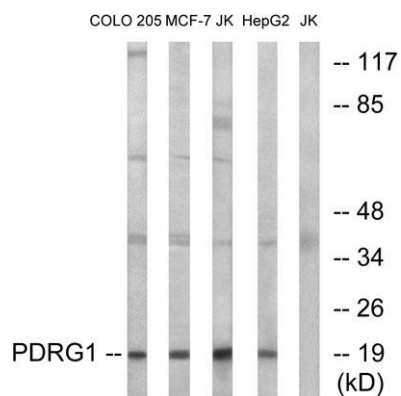
function: May play a role in chaperone-mediated protein folding .,induction: By UV and repressed by TP53/p53 .,similarity: Belongs to the prefoldin subunit beta family .,tissue specificity: Predominantly expressed in normal testis and exhibits reduced but detectable expression in other organs .,



Western Blot analysis of various cells using PDRG1 Polyclonal Antibody



Immunohistochemical analysis of paraffin-embedded Human brain. Antibody was diluted at 1:100(4° overnight). High-pressure and temperature Tris-EDTA,pH8.0 was used for antigen retrieval. Negative contrl (right) obtained from antibody was pre-absorbed by i



Western blot analysis of lysates from Jurkat, COLO, MCF-7, and HepG2 cells, using PDRG1 Antibody. The lane on the right is blocked with the synthesized peptide.