

PDK2 rabbit pAb

Cat#: orb766045 (Manual)

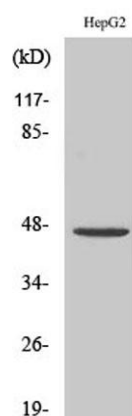
For research use only. Not intended for diagnostic use.

Product Name	PDK2 rabbit pAb
Host species	Rabbit
Applications	WB;IHC;IF;ELISA
Species Cross-Reactivity	Human;Mouse;Rat
Recommended dilutions	Western Blot: 1/500 - 1/2000. Immunohistochemistry: 1/100 - 1/300. ELISA: 1/20000. Not yet tested in other applications.
Immunogen	The antiserum was produced against synthesized peptide derived from human PDK2. AA range:260-309
Specificity	PDK2 Polyclonal Antibody detects endogenous levels of PDK2 protein.
Formulation	Liquid in PBS containing 50% glycerol, 0.5% BSA and 0.02% sodium azide..
Storage	Store at -20°C. Avoid repeated freeze-thaw cycles.
Protein Name	[Pyruvate dehydrogenase [lipoamide]] kinase isozyme 2 mitochondrial
Gene Name	PDK2
Cellular localization	Mitochondrion matrix.
Purification	The antibody was affinity-purified from rabbit antiserum by affinity-chromatography using epitope-specific immunogen.
Clonality	Polyclonal

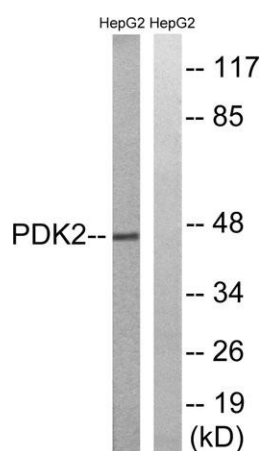
Concentration	1 mg/ml
Observed band	46kD
Human Gene ID	5164
Human Swiss-Prot Number	Q15119
Alternative Names	PDK2; PDHK2; [Pyruvate dehydrogenase [lipoamide]] kinase isozyme 2; mitochondrial; Pyruvate dehydrogenase kinase isoform 2

Background

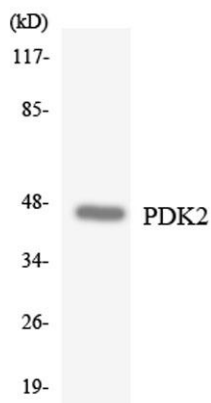
This gene encodes a member of the pyruvate dehydrogenase kinase family. The encoded protein phosphorylates pyruvate dehydrogenase, down-regulating the activity of the mitochondrial pyruvate dehydrogenase complex. Overexpression of this gene may play a role in both cancer and diabetes. Alternatively spliced transcript variants encoding multiple isoforms have been observed for this gene. [provided by RefSeq, Dec 2010],



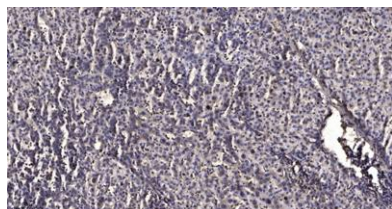
Western Blot analysis of various cells using PDK2 Polyclonal Antibody diluted at 1:500



Western blot analysis of lysates from HepG2 cells, using PDK2 Antibody. The lane on the right is blocked with the synthesized peptide.



Western blot analysis of the lysates from HepG2 cells using PDK2 antibody.



Immunohistochemical analysis of paraffin-embedded human liver cancer. 1, Antibody was diluted at 1:200(4° overnight). 2, Tris-EDTA,pH9.0 was used for antigen retrieval. 3,Secondary antibody was diluted at 1:200(room temperature, 45min).