

**PDGF-A rabbit pAb****Cat#: orb766039 (Manual)**

For research use only. Not intended for diagnostic use.

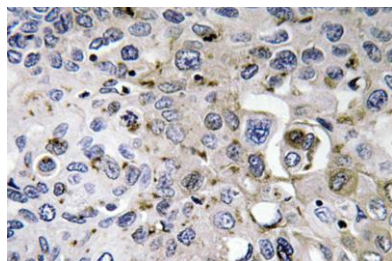
<b>Product Name</b>	PDGF-A rabbit pAb
<b>Host species</b>	Rabbit
<b>Applications</b>	WB;IHC;IF;ELISA
<b>Species Cross-Reactivity</b>	Human;Mouse;Rat
<b>Recommended dilutions</b>	Western Blot: 1/500 - 1/2000. Immunohistochemistry: 1/100 - 1/300. ELISA: 1/40000. Not yet tested in other applications.
<b>Immunogen</b>	The antiserum was produced against synthesized peptide derived from human PDGF-A. AA range:105-154
<b>Specificity</b>	PDGF-A Polyclonal Antibody detects endogenous levels of PDGF-A protein.
<b>Formulation</b>	Liquid in PBS containing 50% glycerol, 0.5% BSA and 0.02% sodium azide..
<b>Storage</b>	Store at -20°C. Avoid repeated freeze-thaw cycles.
<b>Protein Name</b>	Platelet-derived growth factor subunit A
<b>Gene Name</b>	PDGFA
<b>Cellular localization</b>	Secreted. Released by platelets upon wounding.
<b>Purification</b>	The antibody was affinity-purified from rabbit antiserum by affinity-chromatography using epitope-specific immunogen.
<b>Clonality</b>	Polyclonal

<b>Concentration</b>	1 mg/ml
<b>Observed band</b>	17kD
<b>Human Gene ID</b>	5154
<b>Human Swiss-Prot Number</b>	P04085
<b>Alternative Names</b>	PDGFA; PDGF1; Platelet-derived growth factor subunit A; PDGF subunit A; PDGF-1; Platelet-derived growth factor A chain; Platelet-derived growth factor alpha polypeptide

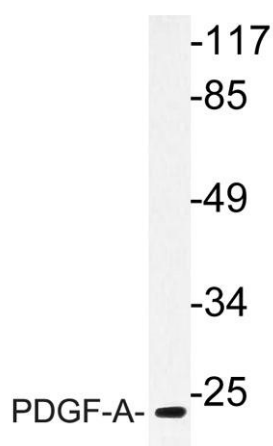
**Background** platelet derived growth factor subunit A(PDGFA) Homo sapiens This gene encodes a member of the protein family comprised of both platelet-derived growth factors (PDGF) and vascular endothelial growth factors (VEGF). The encoded preproprotein is proteolytically processed to generate platelet-derived growth factor subunit A, which can homodimerize, or alternatively, heterodimerize with the related platelet-derived growth factor subunit B. These proteins bind and activate PDGF receptor tyrosine kinases, which play a role in a wide range of developmental processes. Alternative splicing results in multiple transcript variants. [provided by RefSeq, Oct 2015],



**Western Blot analysis of various cells using PDGF-A Polyclonal Antibody**



**Immunohistochemistry analysis of PDGF-A antibody in paraffin-embedded human lung carcinoma tissue.**



**Western blot analysis of lysate from Jurkat cells, using PDGF-A antibody.**