

**Pdcd-4 rabbit pAb****Cat#: orb766036 (Manual)**

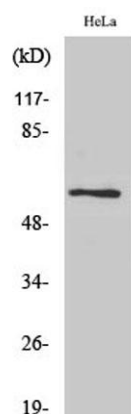
For research use only. Not intended for diagnostic use.

<b>Product Name</b>	Pdcd-4 rabbit pAb
<b>Host species</b>	Rabbit
<b>Applications</b>	WB;IHC;IF;ELISA
<b>Species Cross-Reactivity</b>	Human;Mouse;Rat
<b>Recommended dilutions</b>	Western Blot: 1/500 - 1/2000. Immunohistochemistry: 1/100 - 1/300. Immunofluorescence: 1/200 - 1/1000. ELISA: 1/20000. Not yet tested in other applications.
<b>Immunogen</b>	The antiserum was produced against synthesized peptide derived from human PDCD4. AA range:420-469
<b>Specificity</b>	Pdcd-4 Polyclonal Antibody detects endogenous levels of Pdcd-4 protein.
<b>Formulation</b>	Liquid in PBS containing 50% glycerol, 0.5% BSA and 0.02% sodium azide..
<b>Storage</b>	Store at -20°C. Avoid repeated freeze-thaw cycles.
<b>Protein Name</b>	Programmed cell death protein 4
<b>Gene Name</b>	PDCD4
<b>Cellular localization</b>	Nucleus . Cytoplasm . Shuttles between the nucleus and cytoplasm (By similarity). Predominantly nuclear under normal growth conditions, and when phosphorylated at Ser-457 (PubMed:16357133). .
<b>Purification</b>	The antibody was affinity-purified from rabbit antiserum by affinity-chromatography using epitope-specific immunogen.

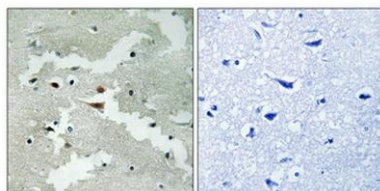
<b>Clonality</b>	Polyclonal
<b>Concentration</b>	1 mg/ml
<b>Observed band</b>	51kD
<b>Human Gene ID</b>	27250
<b>Human Swiss-Prot Number</b>	Q53EL6
<b>Alternative Names</b>	PDCD4; H731; Programmed cell death protein 4; Neoplastic transformation inhibitor protein; Nuclear antigen H731-like; Protein 197/15a

### Background

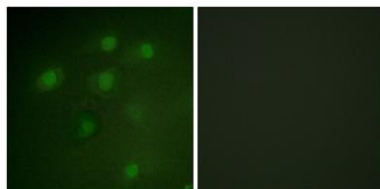
This gene is a tumor suppressor and encodes a protein that binds to the eukaryotic translation initiation factor 4A1 and inhibits its function by preventing RNA binding. Alternative splicing results in multiple transcript variants. [provided by RefSeq, Dec 2010],



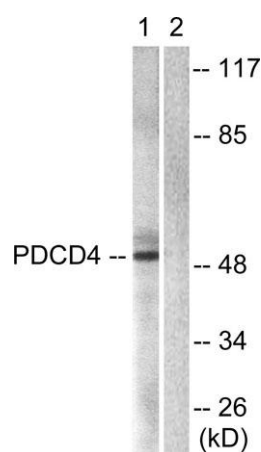
Western Blot analysis of various cells using Pcd-4 Polyclonal Antibody



Immunohistochemical analysis of paraffin-embedded Human brain. Antibody was diluted at 1:100(4° overnight). High-pressure and temperature Tris-EDTA,pH8.0 was used for antigen retrieval. Negative ctrl (right) obtained from antibody was pre-absorbed by immunogen peptide.



**Immunofluorescence analysis of HeLa cells, using PDCD4 Antibody. The picture on the right is blocked with the synthesized peptide.**



**Western blot analysis of lysates from 293 cells, using PDCD4 Antibody. The lane on the right is blocked with the synthesized peptide.**