

Pax-2 rabbit pAb

Cat#: orb766027 (Manual)

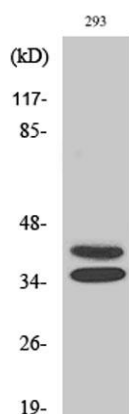
For research use only. Not intended for diagnostic use.

Product Name	Pax-2 rabbit pAb
Host species	Rabbit
Applications	WB;IHC;IF;ELISA
Species Cross-Reactivity	Human;Mouse
Recommended dilutions	Western Blot: 1/500 - 1/2000. Immunohistochemistry: 1/100 - 1/300. ELISA: 1/5000. Not yet tested in other applications.
Immunogen	The antiserum was produced against synthesized peptide derived from human Pax-2. AA range:144-193
Specificity	Pax-2 Polyclonal Antibody detects endogenous levels of Pax-2 protein.
Formulation	Liquid in PBS containing 50% glycerol, 0.5% BSA and 0.02% sodium azide..
Storage	Store at -20°C. Avoid repeated freeze-thaw cycles.
Protein Name	Paired box protein Pax-2
Gene Name	PAX2
Cellular localization	Nucleus.
Purification	The antibody was affinity-purified from rabbit antiserum by affinity-chromatography using epitope-specific immunogen.
Clonality	Polyclonal

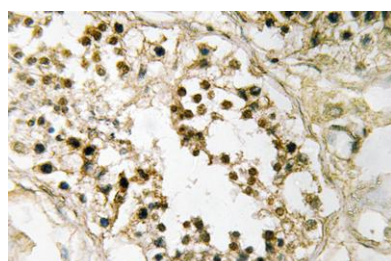
Concentration	1 mg/ml
Observed band	42,35kD
Human Gene ID	5076
Human Swiss-Prot Number	Q02962
Alternative Names	PAX2; Paired box protein Pax-2

Background

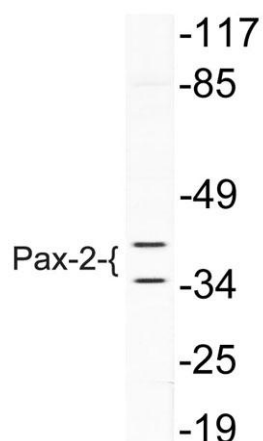
PAX2 encodes paired box gene 2, one of many human homologues of the *Drosophila melanogaster* gene *prd*. The central feature of this transcription factor gene family is the conserved DNA-binding paired box domain. PAX2 is believed to be a target of transcriptional suppression by the tumor suppressor gene WT1. Mutations within PAX2 have been shown to result in optic nerve colobomas and renal hypoplasia. Alternative splicing of this gene results in multiple transcript variants. [provided by RefSeq, Dec 2014],



Western Blot analysis of various cells using Pax-2 Polyclonal Antibody



Immunohistochemistry analysis of Pax-2 antibody in paraffin-embedded human testis tissue.



Western blot analysis of lysate from 293 cells, using Pax-2 antibody.