

PAH rabbit pAb**Cat#: orb766017 (Manual)**

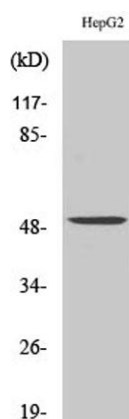
For research use only. Not intended for diagnostic use.

Product Name	PAH rabbit pAb
Host species	Rabbit
Applications	WB;IHC;IF;ELISA
Species Cross-Reactivity	Human;Mouse;Rat
Recommended dilutions	Western Blot: 1/500 - 1/2000. Immunohistochemistry: 1/100 - 1/300. ELISA: 1/40000. Not yet tested in other applications.
Immunogen	The antiserum was produced against synthesized peptide derived from human PAH. AA range:351-400
Specificity	PAH Polyclonal Antibody detects endogenous levels of PAH protein.
Formulation	Liquid in PBS containing 50% glycerol, 0.5% BSA and 0.02% sodium azide..
Storage	Store at -20°C. Avoid repeated freeze-thaw cycles.
Protein Name	Phenylalanine-4-hydroxylase
Gene Name	PAH
Cellular localization	cytosol,extracellular exosome,
Purification	The antibody was affinity-purified from rabbit antiserum by affinity-chromatography using epitope-specific immunogen.
Clonality	Polyclonal

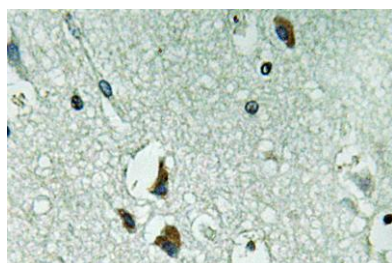
Concentration	1 mg/ml
Observed band	51kD
Human Gene ID	5053
Human Swiss-Prot Number	P00439
Alternative Names	PAH; Phenylalanine-4-hydroxylase; PAH; Phe-4-monooxygenase

Background

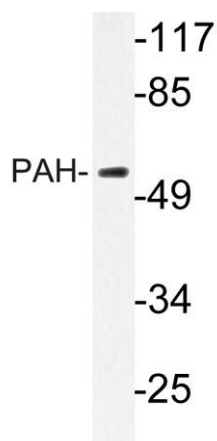
PAH encodes the enzyme phenylalanine hydroxylase that is the rate-limiting step in phenylalanine catabolism. Deficiency of this enzyme activity results in the autosomal recessive disorder phenylketonuria. [provided by RefSeq, Jul 2008],



Western Blot analysis of various cells using PAH Polyclonal Antibody



Immunohistochemistry analysis of PAH antibody in paraffin-embedded human brain tissue.



Western blot analysis of lysate from HepG2 cells, using PAH antibody.