

P2RY8 rabbit pAb

Cat#: orb765980 (Manual)

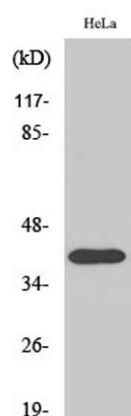
For research use only. Not intended for diagnostic use.

Product Name	P2RY8 rabbit pAb
Host species	Rabbit
Applications	WB;IF;ELISA
Species Cross-Reactivity	Human;Rat;Mouse;
Recommended dilutions	Western Blot: 1/500 - 1/2000. Immunofluorescence: 1/200 - 1/1000. ELISA: 1/20000. Not yet tested in other applications.
Immunogen	The antiserum was produced against synthesized peptide derived from human P2RY8. AA range:192-241
Specificity	P2RY8 Polyclonal Antibody detects endogenous levels of P2RY8 protein.
Formulation	Liquid in PBS containing 50% glycerol, 0.5% BSA and 0.02% sodium azide..
Storage	Store at -20°C. Avoid repeated freeze-thaw cycles.
Protein Name	P2Y purinoceptor 8
Gene Name	P2RY8
Cellular localization	Cell membrane; Multi-pass membrane protein.
Purification	The antibody was affinity-purified from rabbit antiserum by affinity-chromatography using epitope-specific immunogen.
Clonality	Polyclonal

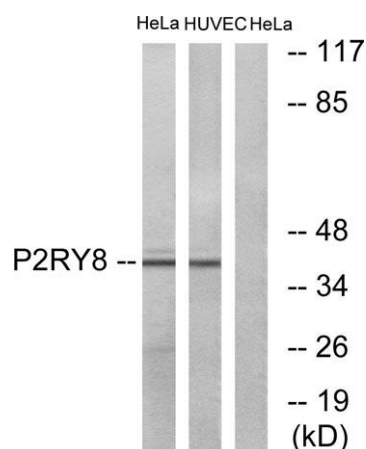
Concentration	1 mg/ml
Observed band	41kD
Human Gene ID	286530
Human Swiss-Prot Number	Q86VZ1
Alternative Names	P2RY8; P2Y purinoceptor 8; P2Y8

Background

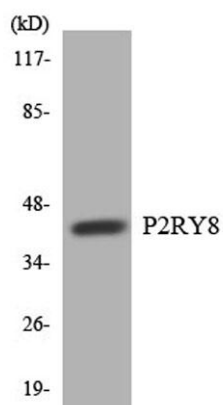
purinergic receptor P2Y8(P2RY8) Homo sapiens The protein encoded by this gene belongs to the family of G-protein coupled receptors, that are preferentially activated by adenosine and uridine nucleotides. This gene is moderately expressed in undifferentiated HL60 cells, and is located on both chromosomes X and Y. [provided by RefSeq, Jul 2008],



Western Blot analysis of various cells using P2RY8 Polyclonal Antibody diluted at 1:2000



Western blot analysis of lysates from HeLa and HUVEC cells, using P2RY8 Antibody. The lane on the right is blocked with the synthesized peptide.



Western blot analysis of the lysates from COLO205 cells using P2RY8 antibody.