

OTUD2 rabbit pAb**Cat#: orb765963 (Manual)**

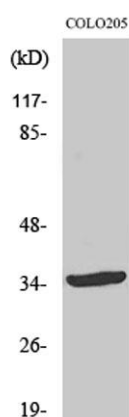
For research use only. Not intended for diagnostic use.

Product Name	OTUD2 rabbit pAb
Host species	Rabbit
Applications	WB;ELISA
Species Cross-Reactivity	Human;Rat;Mouse;
Recommended dilutions	Western Blot: 1/500 - 1/2000. ELISA: 1/10000. Not yet tested in other applications.
Immunogen	The antiserum was produced against synthesized peptide derived from human YOD1. AA range:116-165
Specificity	OTUD2 Polyclonal Antibody detects endogenous levels of OTUD2 protein.
Formulation	Liquid in PBS containing 50% glycerol, 0.5% BSA and 0.02% sodium azide..
Storage	Store at -20°C. Avoid repeated freeze-thaw cycles.
Protein Name	Ubiquitin thioesterase OTU1
Gene Name	YOD1
Cellular localization	Cytoplasm . Recruited to damaged lysosomes decorated with K48-linked ubiquitin chains. .
Purification	The antibody was affinity-purified from rabbit antiserum by affinity-chromatography using epitope-specific immunogen.
Clonality	Polyclonal

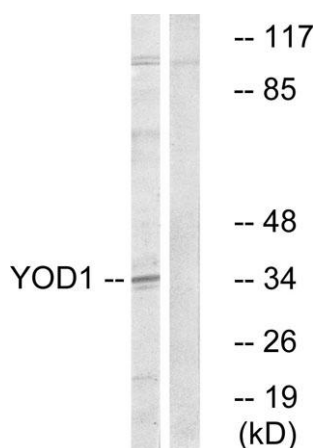
Concentration	1 mg/ml
Observed band	35kD
Human Gene ID	55432
Human Swiss-Prot Number	Q5VVQ6
Alternative Names	YOD1; DUBA8; HIN7; OTUD2; Ubiquitin thioesterase OTU1; DUBA-8; HIV-1-induced protease 7; HIN-7; HsHIN7; OTU domain-containing protein 2

Background

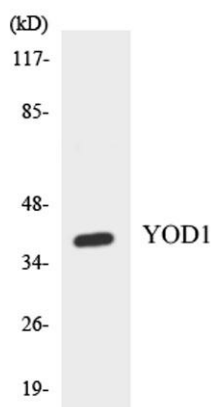
Protein ubiquitination controls many intracellular processes, including cell cycle progression, transcriptional activation, and signal transduction. This dynamic process, involving ubiquitin conjugating enzymes and deubiquitinating enzymes, adds and removes ubiquitin. Deubiquitinating enzymes are cysteine proteases that specifically cleave ubiquitin from ubiquitin-conjugated protein substrates. The protein encoded by this gene belongs to a DUB subfamily characterized by an ovarian tumor (OTU) domain. Alternative splicing results in multiple transcript variants. [provided by RefSeq, Jan 2013],



Western Blot analysis of various cells using OTUD2 Polyclonal Antibody



Western blot analysis of lysates from COLO cells, using YOD1 Antibody. The lane on the right is blocked with the synthesized peptide.



Western blot analysis of the lysates from HT-29 cells using YOD1 antibody.