

ORCTL2 rabbit pAb**Cat#: orb765961 (Manual)**

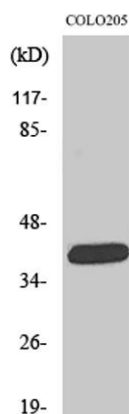
For research use only. Not intended for diagnostic use.

Product Name	ORCTL2 rabbit pAb
Host species	Rabbit
Applications	WB;IF;ELISA
Species Cross-Reactivity	Human;Rat;Mouse;
Recommended dilutions	Western Blot: 1/500 - 1/2000. Immunofluorescence: 1/200 - 1/1000. ELISA: 1/10000. Not yet tested in other applications.
Immunogen	The antiserum was produced against synthesized peptide derived from human ORCTL-2. AA range:359-408
Specificity	ORCTL2 Polyclonal Antibody detects endogenous levels of ORCTL2 protein.
Formulation	Liquid in PBS containing 50% glycerol, 0.5% BSA and 0.02% sodium azide..
Storage	Store at -20°C. Avoid repeated freeze-thaw cycles.
Protein Name	Solute carrier family 22 member 18
Gene Name	SLC22A18
Cellular localization	Apical cell membrane ; Multi-pass membrane protein . Localized at the apical membrane surface of renal proximal tubules. .
Purification	The antibody was affinity-purified from rabbit antiserum by affinity-chromatography using epitope-specific immunogen.
Clonality	Polyclonal

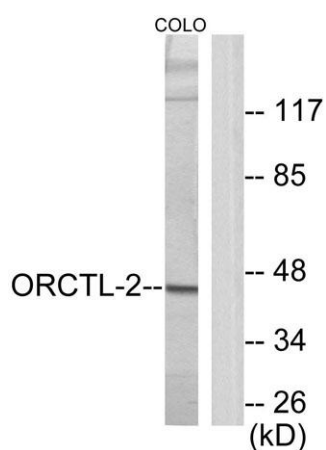
Concentration	1 mg/ml
Observed band	43kD
Human Gene ID	5002
Human Swiss-Prot Number	Q96BI1
Alternative Names	SLC22A18; BWR1A; BWSCR1A; HET; IMPT1; ITM; ORCTL2; SLC22A1L; TSSC5; Solute carrier family 22 member 18; Beckwith-Wiedemann syndrome chromosomal region 1 candidate gene A protein; Efflux transporter-like protein; Imprinted multi-membrane-spa

Background

This gene is one of several tumor-suppressing subtransferable fragments located in the imprinted gene domain of 11p15.5, an important tumor-suppressor gene region. Alterations in this region have been associated with the Beckwith-Wiedemann syndrome, Wilms tumor, rhabdomyosarcoma, adrenocortical carcinoma, and lung, ovarian, and breast cancer. This gene is imprinted, with preferential expression from the maternal allele. Mutations in this gene have been found in Wilms' tumor and lung cancer. This protein may act as a transporter of organic cations, and have a role in the transport of chloroquine and quinidine-related compounds in kidney. Several alternatively spliced transcript variants encoding different isoforms have been described. [provided by RefSeq, Oct 2015],



Western Blot analysis of various cells using ORCTL2 Polyclonal Antibody



Western blot analysis of lysates from COLO205 cells, using ORCTL-2 Antibody. The lane on the right is blocked with the synthesized peptide.