

ORC1 rabbit pAb

Cat#: orb765960 (Manual)

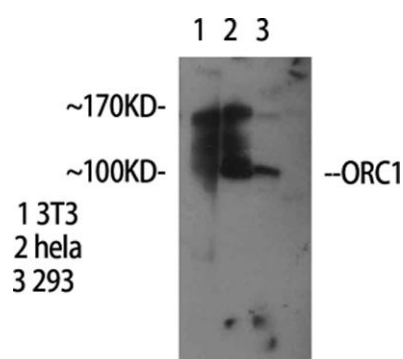
For research use only. Not intended for diagnostic use.

Product Name	ORC1 rabbit pAb
Host species	Rabbit
Applications	WB;ELISA
Species Cross-Reactivity	Human;Rat;Mouse;
Recommended dilutions	Western Blot: 1/500 - 1/2000. ELISA: 1/5000. Not yet tested in other applications.
Immunogen	The antiserum was produced against synthesized peptide derived from human ORC1L. AA range:331-380
Specificity	ORC1 Polyclonal Antibody detects endogenous levels of ORC1 protein.
Formulation	Liquid in PBS containing 50% glycerol, 0.5% BSA and 0.02% sodium azide..
Storage	Store at -20°C. Avoid repeated freeze-thaw cycles.
Protein Name	Origin recognition complex subunit 1
Gene Name	ORC1
Cellular localization	Nucleus.
Purification	The antibody was affinity-purified from rabbit antiserum by affinity-chromatography using epitope-specific immunogen.
Clonality	Polyclonal

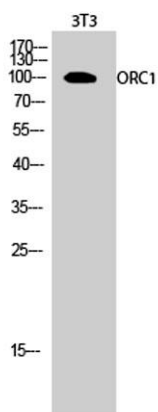
Concentration	1 mg/ml
Observed band	100,120kD
Human Gene ID	4998
Human Swiss-Prot Number	Q13415
Alternative Names	ORC1; ORC1L; PARC1; Origin recognition complex subunit 1; Replication control protein 1

Background

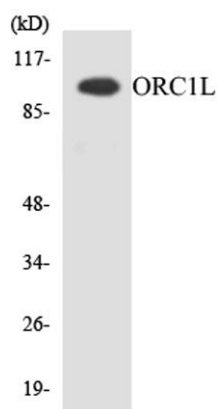
The origin recognition complex (ORC) is a highly conserved six subunits protein complex essential for the initiation of the DNA replication in eukaryotic cells. Studies in yeast demonstrated that ORC binds specifically to origins of replication and serves as a platform for the assembly of additional initiation factors such as Cdc6 and Mcm proteins. The protein encoded by this gene is the largest subunit of the ORC complex. While other ORC subunits are stable throughout the cell cycle, the levels of this protein vary during the cell cycle, which has been shown to be controlled by ubiquitin-mediated proteolysis after initiation of DNA replication. This protein is found to be selectively phosphorylated during mitosis. It is also reported to interact with MYST histone acetyltransferase 2 (MyST2/HBO1), a protein involved in control of transcription silencing. Alternatively spliced transcr



Western Blot analysis of various cells using ORC1 Polyclonal Antibody



Western Blot analysis of 3T3 cells using ORC1 Polyclonal Antibody



Western blot analysis of the lysates from HepG2 cells using ORC1L antibody.