

Olfactory receptor 6K2 rabbit pAb

Cat#: orb765944 (Manual)

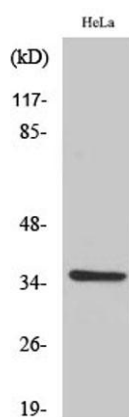
For research use only. Not intended for diagnostic use.

Product Name	Olfactory receptor 6K2 rabbit pAb
Host species	Rabbit
Applications	WB;ELISA
Species Cross-Reactivity	Human;Rat;Mouse;
Recommended dilutions	Western Blot: 1/500 - 1/2000. ELISA: 1/10000. Not yet tested in other applications.
Immunogen	The antiserum was produced against synthesized peptide derived from human OR6K2. AA range:271-320
Specificity	Olfactory receptor 6K2 Polyclonal Antibody detects endogenous levels of Olfactory receptor 6K2 protein.
Formulation	Liquid in PBS containing 50% glycerol, 0.5% BSA and 0.02% sodium azide..
Storage	Store at -20°C. Avoid repeated freeze-thaw cycles.
Protein Name	Olfactory receptor 6K2
Gene Name	OR6K2
Cellular localization	Cell membrane; Multi-pass membrane protein.
Purification	The antibody was affinity-purified from rabbit antiserum by affinity-chromatography using epitope-specific immunogen.
Clonality	Polyclonal

Concentration	1 mg/ml
Observed band	37kD
Human Gene ID	81448
Human Swiss-Prot Number	Q8NGY2
Alternative Names	OR6K2; Olfactory receptor 6K2; Olfactory receptor OR1-17

Background

olfactory receptor family 6 subfamily K member 2(OR6K2) Homo sapiens Olfactory receptors interact with odorant molecules in the nose, to initiate a neuronal response that triggers the perception of a smell. The olfactory receptor proteins are members of a large family of G-protein-coupled receptors (GPCR) arising from single coding-exon genes. Olfactory receptors share a 7-transmembrane domain structure with many neurotransmitter and hormone receptors and are responsible for the recognition and G protein-mediated transduction of odorant signals. The olfactory receptor gene family is the largest in the genome. The nomenclature assigned to the olfactory receptor genes and proteins for this organism is independent of other organisms. [provided by RefSeq, Jul 2008],



Western Blot analysis of various cells using Olfactory receptor 6K2 Polyclonal Antibody

