

Olfactory receptor 2M7 rabbit pAb

Cat#: orb765907 (Manual)

For research use only. Not intended for diagnostic use.

Product Name	Olfactory receptor 2M7 rabbit pAb
Host species	Rabbit
Applications	WB;IF;ELISA
Species Cross-Reactivity	Human;Rat;Mouse;
Recommended dilutions	Western Blot: 1/500 - 1/2000. Immunofluorescence: 1/200 - 1/1000. ELISA: 1/10000. Not yet tested in other applications.
Immunogen	The antiserum was produced against synthesized peptide derived from human OR2M7. AA range:241-290
Specificity	Olfactory receptor 2M7 Polyclonal Antibody detects endogenous levels of Olfactory receptor 2M7 protein.
Formulation	Liquid in PBS containing 50% glycerol, 0.5% BSA and 0.02% sodium azide..
Storage	Store at -20°C. Avoid repeated freeze-thaw cycles.
Protein Name	Olfactory receptor 2M7
Gene Name	OR2M7
Cellular localization	Cell membrane; Multi-pass membrane protein.
Purification	The antibody was affinity-purified from rabbit antiserum by affinity-chromatography using epitope-specific immunogen.
Clonality	Polyclonal

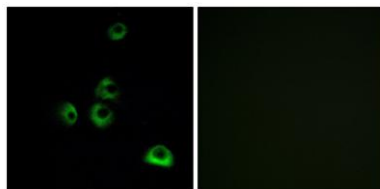
Concentration	1 mg/ml
Observed band	34kD
Human Gene ID	391196
Human Swiss-Prot Number	Q8NG81
Alternative Names	OR2M7; Olfactory receptor 2M7; Olfactory receptor OR1-58

Background

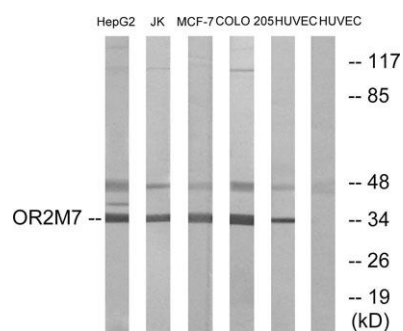
olfactory receptor family 2 subfamily M member 7(OR2M7) Homo sapiens Olfactory receptors interact with odorant molecules in the nose, to initiate a neuronal response that triggers the perception of a smell. The olfactory receptor proteins are members of a large family of G-protein-coupled receptors (GPCR) arising from single coding-exon genes. Olfactory receptors share a 7-transmembrane domain structure with many neurotransmitter and hormone receptors and are responsible for the recognition and G protein-mediated transduction of odorant signals. The olfactory receptor gene family is the largest in the genome. The nomenclature assigned to the olfactory receptor genes and proteins for this organism is independent of other organisms. [provided by RefSeq, Jul 2008],



Western Blot analysis of various cells using Olfactory receptor 2M7 Polyclonal Antibody diluted at 1:2000



Immunofluorescence analysis of MCF7 cells, using OR2M7 Antibody. The picture on the right is blocked with the synthesized peptide.



Western blot analysis of lysates from HUVEC, COLO, MCF-7, Jurkat, and HepG2 cells, using OR2M7 Antibody. The lane on the right is blocked with the synthesized peptide.