

## Olfactory receptor 10G4 rabbit pAb

**Cat#: orb765885 (Manual)**

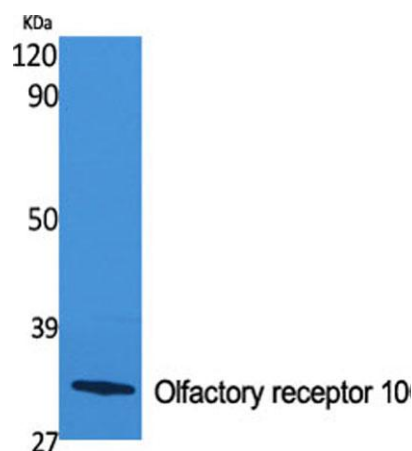
For research use only. Not intended for diagnostic use.

<b>Product Name</b>	Olfactory receptor 10G4 rabbit pAb
<b>Host species</b>	Rabbit
<b>Applications</b>	WB;IF;ELISA
<b>Species Cross-Reactivity</b>	Human;Rat;Mouse;
<b>Recommended dilutions</b>	Western Blot: 1/500 - 1/2000. Immunofluorescence: 1/200 - 1/1000. ELISA: 1/10000. Not yet tested in other applications.
<b>Immunogen</b>	The antiserum was produced against synthesized peptide derived from human OR10G4. AA range:230-279
<b>Specificity</b>	Olfactory receptor 10G4 Polyclonal Antibody detects endogenous levels of Olfactory receptor 10G4 protein.
<b>Formulation</b>	Liquid in PBS containing 50% glycerol, 0.5% BSA and 0.02% sodium azide..
<b>Storage</b>	Store at -20°C. Avoid repeated freeze-thaw cycles.
<b>Protein Name</b>	Olfactory receptor 10G4
<b>Gene Name</b>	OR10G4
<b>Cellular localization</b>	Cell membrane; Multi-pass membrane protein.
<b>Purification</b>	The antibody was affinity-purified from rabbit antiserum by affinity-chromatography using epitope-specific immunogen.
<b>Clonality</b>	Polyclonal

<b>Concentration</b>	1 mg/ml
<b>Observed band</b>	35kD
<b>Human Gene ID</b>	390264
<b>Human Swiss-Prot Number</b>	Q8NGN3
<b>Alternative Names</b>	OR10G4; Olfactory receptor 10G4; Olfactory receptor OR11-278

### Background

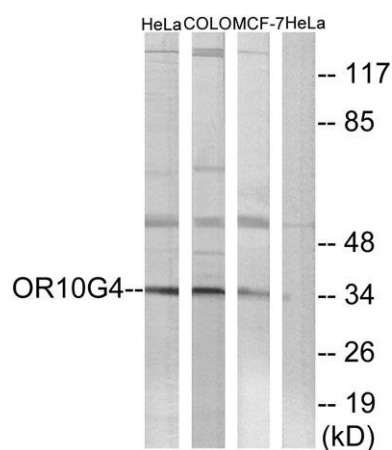
Olfactory receptors interact with odorant molecules in the nose, to initiate a neuronal response that triggers the perception of a smell. The olfactory receptor proteins are members of a large family of G-protein-coupled receptors (GPCR) arising from single coding-exon genes. Olfactory receptors share a 7-transmembrane domain structure with many neurotransmitter and hormone receptors and are responsible for the recognition and G protein-mediated transduction of odorant signals. The olfactory receptor gene family is the largest in the genome. The nomenclature assigned to the olfactory receptor genes and proteins for this organism is independent of other organisms. [provided by RefSeq, Jul 2008].



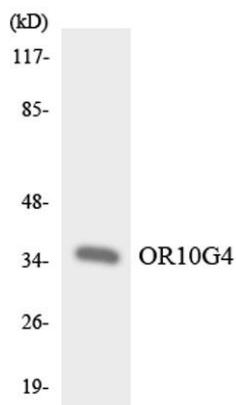
**Western Blot analysis of various cells using Olfactory receptor 10G4 Polyclonal Antibody**



**Western Blot analysis of MCF7 cells using Olfactory receptor 10G4 Polyclonal Antibody**



**Western blot analysis of lysates from HeLa, COLO, and MCF-7 cells, using OR10G4 Antibody. The lane on the right is blocked with the synthesized peptide.**



**Western blot analysis of the lysates from HeLa cells using OR10G4 antibody.**