

Nrl rabbit pAb

Cat#: orb765863 (Manual)

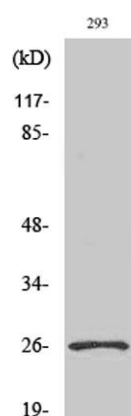
For research use only. Not intended for diagnostic use.

Product Name	Nrl rabbit pAb
Host species	Rabbit
Applications	WB;ELISA
Species Cross-Reactivity	Human;Mouse
Recommended dilutions	Western Blot: 1/500 - 1/2000. ELISA: 1/10000. Not yet tested in other applications.
Immunogen	The antiserum was produced against synthesized peptide derived from human NRL. AA range:19-68
Specificity	Nrl Polyclonal Antibody detects endogenous levels of Nrl protein.
Formulation	Liquid in PBS containing 50% glycerol, 0.5% BSA and 0.02% sodium azide..
Storage	Store at -20°C. Avoid repeated freeze-thaw cycles.
Protein Name	Neural retina-specific leucine zipper protein
Gene Name	NRL
Cellular localization	Cytoplasm . Nucleus .
Purification	The antibody was affinity-purified from rabbit antiserum by affinity-chromatography using epitope-specific immunogen.
Clonality	Polyclonal

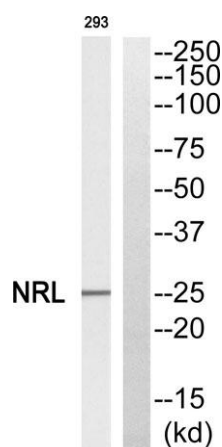
Concentration	1 mg/ml
Observed band	25kD
Human Gene ID	4901
Human Swiss-Prot Number	P54845
Alternative Names	NRL; D14S46E; Neural retina-specific leucine zipper protein; NRL

Background

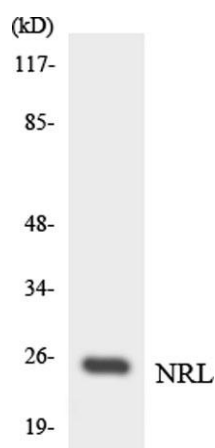
This gene encodes a basic motif-leucine zipper transcription factor of the Maf subfamily. The encoded protein is conserved among vertebrates and is a critical intrinsic regulator of photoreceptor development and function. Mutations in this gene have been associated with retinitis pigmentosa and retinal degenerative diseases. [provided by RefSeq, Jul 2008],



Western Blot analysis of various cells using Nrl Polyclonal Antibody cells nucleus extracted by Minute TM Cytoplasmic and Nuclear Fractionation kit (SC-003, Invent biotech, MN, USA).



Western blot analysis of NRL Antibody. The lane on the right is blocked with the NRL peptide.



Western blot analysis of the lysates from HUVEC cells using NRL antibody.