

**NPDC-1 rabbit pAb****Cat#: orb765854 (Manual)**

For research use only. Not intended for diagnostic use.

<b>Product Name</b>	NPDC-1 rabbit pAb
<b>Host species</b>	Rabbit
<b>Applications</b>	WB;ELISA
<b>Species Cross-Reactivity</b>	Human;Mouse;Rat
<b>Recommended dilutions</b>	Western Blot: 1/500 - 1/2000. ELISA: 1/20000. Not yet tested in other applications.
<b>Immunogen</b>	The antiserum was produced against synthesized peptide derived from human NPDC1. AA range:189-238
<b>Specificity</b>	NPDC-1 Polyclonal Antibody detects endogenous levels of NPDC-1 protein.
<b>Formulation</b>	Liquid in PBS containing 50% glycerol, 0.5% BSA and 0.02% sodium azide..
<b>Storage</b>	Store at -20°C. Avoid repeated freeze-thaw cycles.
<b>Protein Name</b>	Neural proliferation differentiation and control protein 1
<b>Gene Name</b>	NPDC1
<b>Cellular localization</b>	Membrane ; Single-pass membrane protein .
<b>Purification</b>	The antibody was affinity-purified from rabbit antiserum by affinity-chromatography using epitope-specific immunogen.
<b>Clonality</b>	Polyclonal

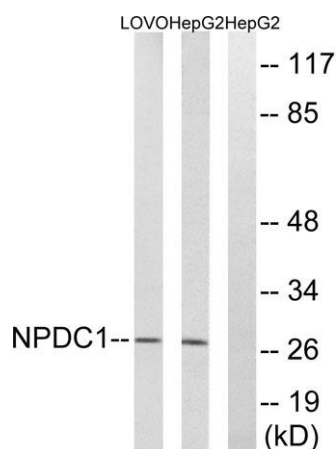
<b>Concentration</b>	1 mg/ml
<b>Observed band</b>	35kD
<b>Human Gene ID</b>	56654
<b>Human Swiss-Prot Number</b>	Q9NQX5
<b>Alternative Names</b>	NPDC1; Neural proliferation differentiation and control protein 1; NPDC-1

### Background

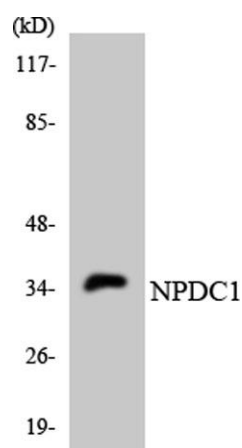
function:Suppresses oncogenic transformation in neural and non-neural cells and down-regulates neural cell proliferation. Might be involved in transcriptional regulation.,similarity:Belongs to the NPDC1/cab-1 family.,tissue specificity:Strongly expressed in adult brain; especially in hippocampus, frontal lobe and temporal lobe.,



Western Blot analysis of various cells using NPDC-1 Polyclonal Antibody



Western blot analysis of lysates from HepG2 and LOVO cells, using NPDC1 Antibody. The lane on the right is blocked with the synthesized peptide.



Western blot analysis of the lysates from K562 cells using NPDC1 antibody.