

Nox3 rabbit pAb

Cat#: orb765852 (Manual)

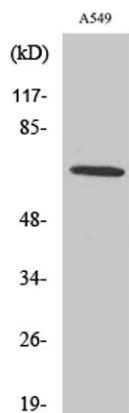
For research use only. Not intended for diagnostic use.

Product Name	Nox3 rabbit pAb
Host species	Rabbit
Applications	WB;IHC;IF;ELISA
Species Cross-Reactivity	Human;Mouse;Rat
Recommended dilutions	Western Blot: 1/500 - 1/2000. Immunohistochemistry: 1/100 - 1/300. ELISA: 1/40000. Not yet tested in other applications.
Immunogen	The antiserum was produced against synthesized peptide derived from human NOX3. AA range:287-336
Specificity	Nox3 Polyclonal Antibody detects endogenous levels of Nox3 protein.
Formulation	Liquid in PBS containing 50% glycerol, 0.5% BSA and 0.02% sodium azide..
Storage	Store at -20°C. Avoid repeated freeze-thaw cycles.
Protein Name	NADPH oxidase 3
Gene Name	NOX3
Cellular localization	Membrane ; Multi-pass membrane protein .
Purification	The antibody was affinity-purified from rabbit antiserum by affinity-chromatography using epitope-specific immunogen.
Clonality	Polyclonal

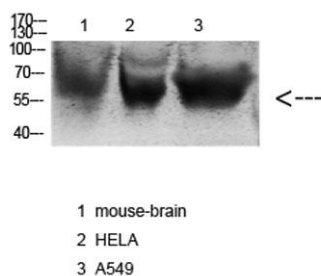
Concentration	1 mg/ml
Observed band	65kD
Human Gene ID	50508
Human Swiss-Prot Number	Q9HBY0
Alternative Names	NOX3; MOX2; NADPH oxidase 3; Mitogenic oxidase 2; MOX-2; gp91phox homolog 3; GP91-3

Background

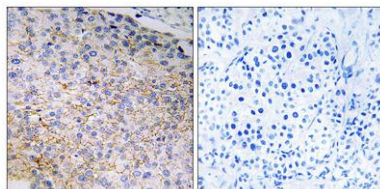
This gene encodes a member of the NOX family of NADPH oxidases. These enzymes have the capacity to generate superoxide and other reactive oxygen species (ROS) and transport electrons across the plasma membrane. The ROS generated by family members have been implicated in numerous biological functions including host defense, posttranslational processing of proteins, cellular signaling, regulation of gene expression, and cell differentiation. The protein encoded by this gene is expressed predominantly in the inner ear and is involved in the biogenesis of otoconia/otolith, which are crystalline structures of the inner ear involved in the perception of gravity.[provided by RefSeq, May 2009],



Western Blot analysis of various cells using Nox3 Polyclonal Antibody



Western blot analysis of various cell Lysate, antibody was diluted at 1:1000. Secondary antibody(catalog#:RS0002) was diluted at 1:20000



Immunohistochemistry analysis of paraffin-embedded human breast carcinoma tissue, using NOX3 Antibody. The picture on the right is blocked with the synthesized peptide.