

**Nkx-2.6 rabbit pAb****Cat#: orb765842 (Manual)**

For research use only. Not intended for diagnostic use.

<b>Product Name</b>	Nkx-2.6 rabbit pAb
<b>Host species</b>	Rabbit
<b>Applications</b>	WB;ELISA
<b>Species Cross-Reactivity</b>	Human;Rat;Mouse;
<b>Recommended dilutions</b>	Western Blot: 1/500 - 1/2000. ELISA: 1/40000. Not yet tested in other applications.
<b>Immunogen</b>	The antiserum was produced against synthesized peptide derived from human NKX26. AA range:91-140
<b>Specificity</b>	Nkx-2.6 Polyclonal Antibody detects endogenous levels of Nkx-2.6 protein.
<b>Formulation</b>	Liquid in PBS containing 50% glycerol, 0.5% BSA and 0.02% sodium azide..
<b>Storage</b>	Store at -20°C. Avoid repeated freeze-thaw cycles.
<b>Protein Name</b>	Homeobox protein Nkx-2.6
<b>Gene Name</b>	NKX2-6
<b>Cellular localization</b>	Nucleus .
<b>Purification</b>	The antibody was affinity-purified from rabbit antiserum by affinity-chromatography using epitope-specific immunogen.
<b>Clonality</b>	Polyclonal

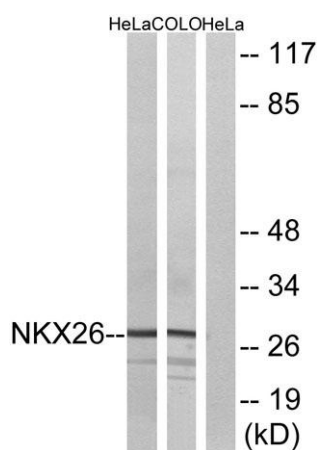
<b>Concentration</b>	1 mg/ml
<b>Observed band</b>	28kD
<b>Human Gene ID</b>	18092
<b>Human Swiss-Prot Number</b>	A6NCS4
<b>Alternative Names</b>	NKX2-6; NKX2F; Homeobox protein Nkx-2.6; Homeobox protein NK-2 homolog F

### Background

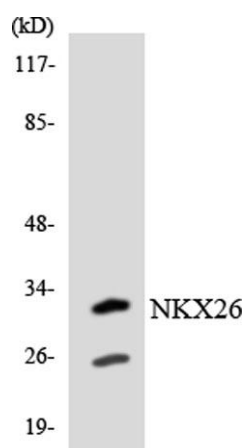
This gene encodes a homeobox-containing protein that belongs to the NK-2 homeobox family. This protein is a vertebrate homolog of *Drosophila* homeobox-containing protein called 'tinman', which has been shown to be essential for development of the heart-like dorsal vessel. In conjunction with related gene, NKX2-5, this gene may play a role in both pharyngeal and cardiac embryonic development. Mutations in this gene are associated with persistent truncus arteriosus.[provided by RefSeq, Aug 2011],



**Western Blot analysis of various cells using Nkx-2.6 Polyclonal Antibody diluted at 1:500**



**Western blot analysis of lysates from HeLa and COLO cells, using NKX26 Antibody. The lane on the right is blocked with the synthesized peptide.**



Western blot analysis of the lysates from Jurkat cells using NKX26 antibody.