

NIPA rabbit pAb

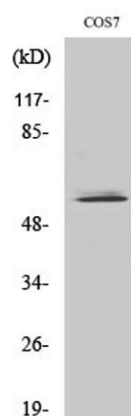
Cat#: orb765838 (Manual)

For research use only. Not intended for diagnostic use.

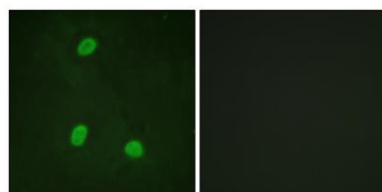
Product Name	NIPA rabbit pAb
Host species	Rabbit
Applications	WB;IF;ELISA
Species Cross-Reactivity	Human;Mouse;Rat;Monkey
Recommended dilutions	Western Blot: 1/500 - 1/2000. Immunofluorescence: 1/200 - 1/1000. ELISA: 1/40000. Not yet tested in other applications.
Immunogen	The antiserum was produced against synthesized peptide derived from human NIPA. AA range:320-369
Specificity	NIPA Polyclonal Antibody detects endogenous levels of NIPA protein.
Formulation	Liquid in PBS containing 50% glycerol, 0.5% BSA and 0.02% sodium azide..
Storage	Store at -20°C. Avoid repeated freeze-thaw cycles.
Protein Name	Nuclear-interacting partner of ALK
Gene Name	ZC3HC1
Cellular localization	Nucleus .
Purification	The antibody was affinity-purified from rabbit antiserum by affinity-chromatography using epitope-specific immunogen.
Clonality	Polyclonal

Concentration	1 mg/ml
Observed band	55kD
Human Gene ID	51530
Human Swiss-Prot Number	Q86WB0
Alternative Names	ZC3HC1; NIPA; HSPC216; Nuclear-interacting partner of ALK; Nuclear-interacting partner of anaplastic lymphoma kinase; hNIPA; Zinc finger C3HC-type protein 1

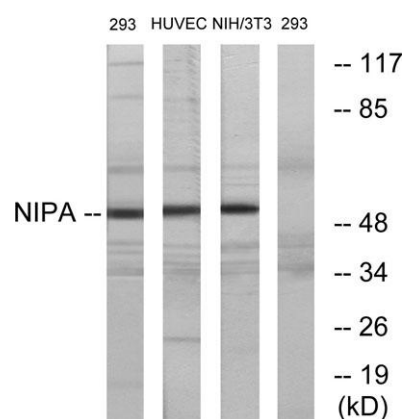
Background This gene encodes an F-box-containing protein that is a component of an SCF-type E3 ubiquitin ligase complex that regulates the onset of cell division. The G2/M transition in the cell cycle requires the interaction of the proteins cyclin B1 and cyclin-dependent kinase 1. The activated ubiquitin ligase complex targets the protein cyclin B1 for degradation, preventing this transition to mitosis. [provided by RefSeq, Aug 2013],



Western Blot analysis of various cells using NIPA Polyclonal Antibody diluted at 1:2000 cells nucleus extracted by Minute TM Cytoplasmic and Nuclear Fractionation kit (SC-003, Invent biotech, MN, USA).



Immunofluorescence analysis of HeLa cells, using NIPA Antibody. The picture on the right is blocked with the synthesized peptide.



Western blot analysis of lysates from 293/HuvEc/NIH/3T3, using NIPA Antibody. The lane on the right is blocked with the synthesized peptide.