

**NGF rabbit pAb****Cat#: orb765833 (Manual)**

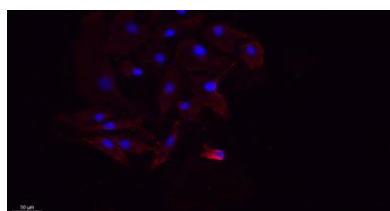
For research use only. Not intended for diagnostic use.

<b>Product Name</b>	NGF rabbit pAb
<b>Host species</b>	Rabbit
<b>Applications</b>	WB;IHC;IF;ELISA
<b>Species Cross-Reactivity</b>	Human;Mouse;Rat
<b>Recommended dilutions</b>	Western Blot: 1/500 - 1/2000. IHC-p: 1:100-300 ELISA: 1/20000. IF 1:100-300 Not yet tested in other applications.
<b>Immunogen</b>	The antiserum was produced against synthesized peptide derived from human NGF. AA range:33-82
<b>Specificity</b>	NGF Polyclonal Antibody detects endogenous levels of NGF protein.
<b>Formulation</b>	Liquid in PBS containing 50% glycerol, 0.5% BSA and 0.02% sodium azide..
<b>Storage</b>	Store at -20°C. Avoid repeated freeze-thaw cycles.
<b>Protein Name</b>	Beta-nerve growth factor
<b>Gene Name</b>	NGF
<b>Cellular localization</b>	Secreted . Endosome lumen . ProNGF is endocytosed after binding to the cell surface receptor formed by SORT1 and NGFR. .
<b>Purification</b>	The antibody was affinity-purified from rabbit antiserum by affinity-chromatography using      epitope-specific immunogen.
<b>Clonality</b>	Polyclonal

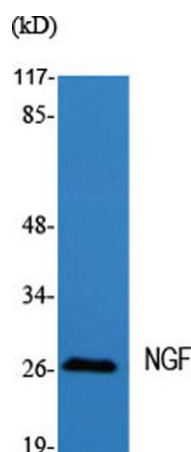
<b>Concentration</b>	1 mg/ml
<b>Observed band</b>	27kD
<b>Human Gene ID</b>	4803
<b>Human Swiss-Prot Number</b>	P01138
<b>Alternative Names</b>	NGF; NGFB; Beta-nerve growth factor; Beta-NGF

### Background

This gene is a member of the NGF-beta family and encodes a secreted protein which homodimerizes and is incorporated into a larger complex. This protein has nerve growth stimulating activity and the complex is involved in the regulation of growth and the differentiation of sympathetic and certain sensory neurons. Mutations in this gene have been associated with hereditary sensory and autonomic neuropathy, type 5 (HSAN5), and dysregulation of this gene's expression is associated with allergic rhinitis. [provided by RefSeq, Jul 2008],



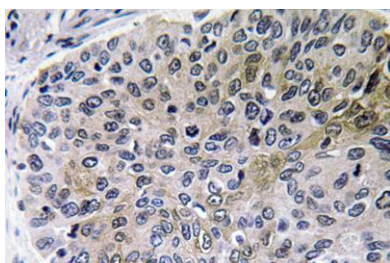
**Immunofluorescence analysis of A549. 1,primary Antibody(red) was diluted at 1:200(4°C overnight). 2, Goat Anti Rabbit IgG (H&L) - Alexa Fluor 594 Secondary antibody was diluted at 1:1000(room temperature, 50min).3, Picture B: DAPI(blue) 10min.**



**Western Blot analysis of various cells using NGF Polyclonal Antibody diluted at 1:2000**



**Western Blot analysis of Jurkat cells using NGF Polyclonal Antibody diluted at 1:2000**



**Immunohistochemistry analysis of NGF antibody in paraffin-embedded human lung carcinoma tissue.**