

NF-YC rabbit pAb**Cat#: orb765817 (Manual)**

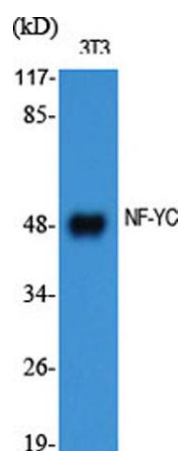
For research use only. Not intended for diagnostic use.

Product Name	NF-YC rabbit pAb
Host species	Rabbit
Applications	WB;IHC;IF;ELISA
Species Cross-Reactivity	Human;Mouse;Rat
Recommended dilutions	Western Blot: 1/500 - 1/2000. Immunohistochemistry: 1/100 - 1/300. ELISA: 1/10000. Not yet tested in other applications.
Immunogen	The antiserum was produced against synthesized peptide derived from human NFYC. AA range:1-50
Specificity	NF-YC Polyclonal Antibody detects endogenous levels of NF-YC protein.
Formulation	Liquid in PBS containing 50% glycerol, 0.5% BSA and 0.02% sodium azide..
Storage	Store at -20°C. Avoid repeated freeze-thaw cycles.
Protein Name	Nuclear transcription factor Y subunit gamma
Gene Name	NFYC
Cellular localization	Nucleus.
Purification	The antibody was affinity-purified from rabbit antiserum by affinity-chromatography using epitope-specific immunogen.
Clonality	Polyclonal

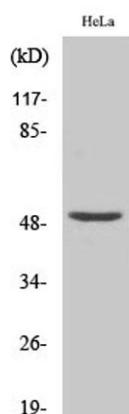
Concentration	1 mg/ml
Observed band	50kD
Human Gene ID	4802
Human Swiss-Prot Number	Q13952
Alternative Names	NFYC; Nuclear transcription factor Y subunit gamma; CAAT box DNA-binding protein subunit C; Nuclear transcription factor Y subunit C; NF-YC; Transactivator HSM-1/2

Background

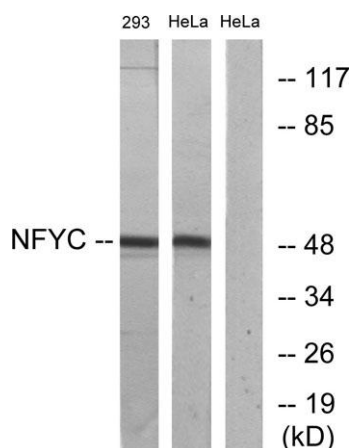
This gene encodes one subunit of a trimeric complex forming a highly conserved transcription factor that binds with high specificity to CCAAT motifs in the promoters of a variety of genes. The encoded protein, subunit C, forms a tight dimer with the B subunit, a prerequisite for subunit A association. The resulting trimer binds to DNA with high specificity and affinity. Subunits B and C each contain a histone-like motif. Multiple transcript variants encoding different isoforms have been found for this gene. [provided by RefSeq, Dec 2008],



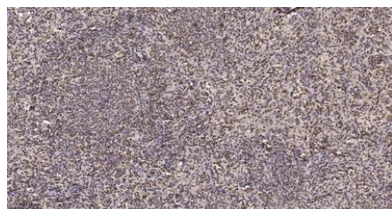
Western Blot analysis of various cells using NF-YC Polyclonal Antibody diluted at 1:1000



Western Blot analysis of 293 cells using NF-YC Polyclonal Antibody diluted at 1:1000



Western blot analysis of lysates from HeLa and 293 cells, using NFYC Antibody. The lane on the right is blocked with the synthesized peptide.



Immunohistochemical analysis of paraffin-embedded human spleen. 1, Tris-EDTA, pH 9.0 was used for antigen retrieval. 2 Antibody was diluted at 1:200 (4°C overnight). 3, Secondary antibody was diluted at 1:200 (room temperature, 45 min).