

Neuromedin-S rabbit pAb

Cat#: orb765807 (Manual)

For research use only. Not intended for diagnostic use.

Product Name	Neuromedin-S rabbit pAb
Host species	Rabbit
Applications	WB;IHC;IF;ELISA
Species Cross-Reactivity	Human;Rat;Mouse;
Recommended dilutions	Western Blot: 1/500 - 1/2000. Immunohistochemistry: 1/100 - 1/300. ELISA: 1/40000. Not yet tested in other applications.
Immunogen	The antiserum was produced against synthesized peptide derived from human NMS. AA range:104-153
Specificity	Neuromedin-S Polyclonal Antibody detects endogenous levels of Neuromedin-S protein.
Formulation	Liquid in PBS containing 50% glycerol, 0.5% BSA and 0.02% sodium azide..
Storage	Store at -20°C. Avoid repeated freeze-thaw cycles.
Protein Name	Neuromedin-S
Gene Name	NMS
Cellular localization	Secreted .
Purification	The antibody was affinity-purified from rabbit antiserum by affinity-chromatography using epitope-specific immunogen.
Clonality	Polyclonal

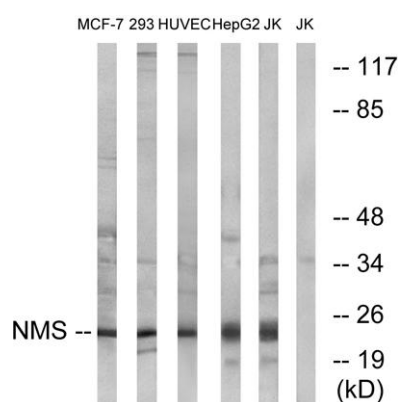
Concentration	1 mg/ml
Observed band	24kD
Human Gene ID	129521
Human Swiss-Prot Number	Q5H8A3
Alternative Names	NMS; Neuromedin-S

Background

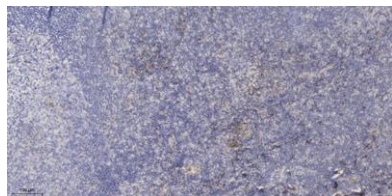
This gene encodes a member of the neuromedin family of neuropeptides. The encoded preproprotein is proteolytically processed to generate a biologically active neuropeptide that plays a role in the regulation of circadian rhythm, anorexigenic action, antidiuretic action, cardiovascular function and stimulation of oxytocin and vasopressin release. [provided by RefSeq, May 2016],



Western Blot analysis of various cells using Neuromedin-S Polyclonal Antibody diluted at 1:1000



Western blot analysis of lysates from Jurkat, HepG2, HUVEC, 293, and MCF-7 cells, using NMS Antibody. The lane on the right is blocked with the synthesized peptide.



Immunohistochemical analysis of paraffin-embedded human tonsil. 1, Antibody was diluted at 1:200(4° overnight). 2, Tris-EDTA,pH9.0 was used for antigen retrieval. 3,Secondary antibody was diluted at 1:200(room temperature, 30min).