

Neuro D2 rabbit pAb

Cat#: orb765804 (Manual)

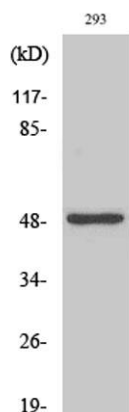
For research use only. Not intended for diagnostic use.

Product Name	Neuro D2 rabbit pAb
Host species	Rabbit
Applications	WB;IHC;IF;ELISA
Species Cross-Reactivity	Human;Mouse;Rat
Recommended dilutions	Western Blot: 1/500 - 1/2000. Immunohistochemistry: 1/100 - 1/300. ELISA: 1/10000. Not yet tested in other applications.
Immunogen	The antiserum was produced against synthesized peptide derived from human NDF2. AA range:61-110
Specificity	Neuro D2 Polyclonal Antibody detects endogenous levels of Neuro D2 protein.
Formulation	Liquid in PBS containing 50% glycerol, 0.5% BSA and 0.02% sodium azide..
Storage	Store at -20°C. Avoid repeated freeze-thaw cycles.
Protein Name	Neurogenic differentiation factor 2
Gene Name	NEUROD2
Cellular localization	Nucleus .
Purification	The antibody was affinity-purified from rabbit antiserum by affinity-chromatography using epitope-specific immunogen.
Clonality	Polyclonal

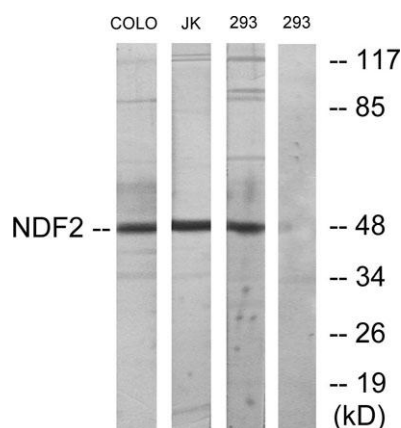
Concentration	1 mg/ml
Observed band	48kD
Human Gene ID	4761
Human Swiss-Prot Number	Q15784
Alternative Names	NEUROD2; BHLHA1; NDRF; Neurogenic differentiation factor 2; NeuroD2; Class A basic helix-loop-helix protein 1; bHLHa1; NeuroD-related factor; NDRF

Background

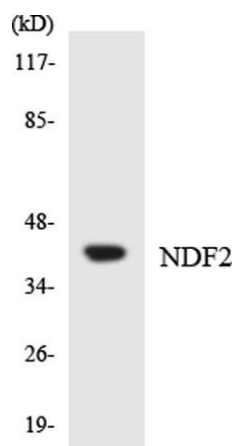
This gene encodes a member of the neuroD family of neurogenic basic helix-loop-helix (bHLH) proteins. Expression of this gene can induce transcription from neuron-specific promoters, such as the GAP-43 promoter, which contain a specific DNA sequence known as an E-box. The product of the human gene can induce neurogenic differentiation in non-neuronal cells in *Xenopus* embryos, and is thought to play a role in the determination and maintenance of neuronal cell fates. [provided by RefSeq, Jul 2008],



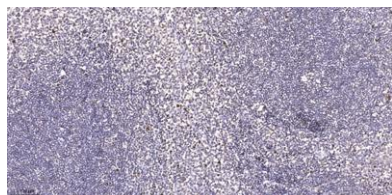
Western Blot analysis of various cells using Neuro D2 Polyclonal Antibody cells nucleus extracted by Minute TM Cytoplasmic and Nuclear Fractionation kit (SC-003, Invent biotech, MN, USA).



Western blot analysis of lysates from 293, COLO, and Jurkat cells, using NDF2 Antibody. The lane on the right is blocked with the synthesized peptide.



Western blot analysis of the lysates from COLO205 cells using NDF2 antibody.



Immunohistochemical analysis of paraffin-embedded human tonsil. 1, Antibody was diluted at 1:200(4° overnight). 2, Tris-EDTA,pH9.0 was used for antigen retrieval. 3,Secondary antibody was diluted at 1:200(room temperature, 45min).