

## Neurexophilin-4 rabbit pAb

**Cat#: orb765803 (Manual)**

For research use only. Not intended for diagnostic use.

<b>Product Name</b>	Neurexophilin-4 rabbit pAb
<b>Host species</b>	Rabbit
<b>Applications</b>	WB;IHC;IF;ELISA
<b>Species Cross-Reactivity</b>	Human;Rat
<b>Recommended dilutions</b>	Western Blot: 1/500 - 1/2000. Immunohistochemistry: 1/100 - 1/300. ELISA: 1/40000. Not yet tested in other applications.
<b>Immunogen</b>	The antiserum was produced against synthesized peptide derived from human NXPH4. AA range:216-265
<b>Specificity</b>	Neurexophilin-4 Polyclonal Antibody detects endogenous levels of Neurexophilin-4 protein.
<b>Formulation</b>	Liquid in PBS containing 50% glycerol, 0.5% BSA and 0.02% sodium azide..
<b>Storage</b>	Store at -20°C. Avoid repeated freeze-thaw cycles.
<b>Protein Name</b>	Neurexophilin-4
<b>Gene Name</b>	NXPH4
<b>Cellular localization</b>	Secreted .
<b>Purification</b>	The antibody was affinity-purified from rabbit antiserum by affinity-chromatography using epitope-specific immunogen.
<b>Clonality</b>	Polyclonal

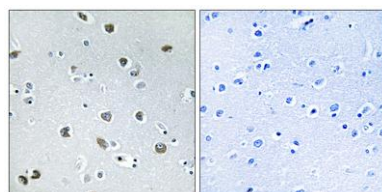
<b>Concentration</b>	1 mg/ml
<b>Observed band</b>	33kD
<b>Human Gene ID</b>	11247
<b>Human Swiss-Prot Number</b>	O95158
<b>Alternative Names</b>	NXPH4; NPH4; Neurexophilin-4

### Background

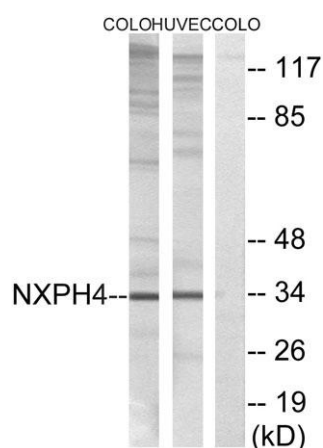
function: May be signaling molecules that resemble neuropeptides and that act by binding to alpha-neurexins and possibly other receptors .,PTM: May be proteolytically processed at the boundary between the N-terminal non-conserved and the central conserved domain in neuron-like cells.,similarity: Belongs to the neurexophilin family.,tissue specificity: Expressed in brain, spleen, and testis.,



**Western Blot analysis of various cells using Neurexophilin-4 Polyclonal Antibody**



**Immunohistochemistry analysis of paraffin-embedded human brain tissue, using NXPH4 Antibody. The picture on the right is blocked with the synthesized peptide.**



**Western blot analysis of lysates from COLO and HUVEC cells, using NXPH4 Antibody. The lane on the right is blocked with the synthesized peptide.**