

NEIL3 rabbit pAb**Cat#: orb765792 (Manual)**

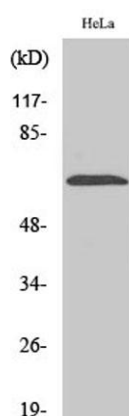
For research use only. Not intended for diagnostic use.

Product Name	NEIL3 rabbit pAb
Host species	Rabbit
Applications	WB;IHC;IF;ELISA
Species Cross-Reactivity	Human;Mouse
Recommended dilutions	Western Blot: 1/500 - 1/2000. Immunohistochemistry: 1/100 - 1/300. ELISA: 1/40000. Not yet tested in other applications.
Immunogen	The antiserum was produced against synthesized peptide derived from human NEIL3. AA range:491-540
Specificity	NEIL3 Polyclonal Antibody detects endogenous levels of NEIL3 protein.
Formulation	Liquid in PBS containing 50% glycerol, 0.5% BSA and 0.02% sodium azide..
Storage	Store at -20°C. Avoid repeated freeze-thaw cycles.
Protein Name	Endonuclease 8-like 3
Gene Name	NEIL3
Cellular localization	Nucleus . Chromosome . Recruited to replication stress sites via interaction with ubiquitinated CMG helicase. .
Purification	The antibody was affinity-purified from rabbit antiserum by affinity-chromatography using epitope-specific immunogen.
Clonality	Polyclonal

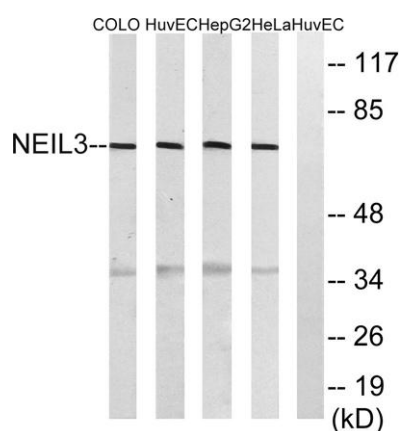
Concentration	1 mg/ml
Observed band	35kD
Human Gene ID	55247
Human Swiss-Prot Number	Q8TAT5
Alternative Names	NEIL3; Endonuclease 8-like 3; DNA glycosylase FPG2; DNA glycosylase/AP lyase Neil3; Endonuclease VIII-like 3; Nei-like protein 3

Background

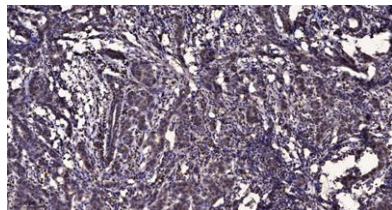
NEIL3 belongs to a class of DNA glycosylases homologous to the bacterial Fpg/Nei family. These glycosylases initiate the first step in base excision repair by cleaving bases damaged by reactive oxygen species and introducing a DNA strand break via the associated lyase reaction (Bandaru et al., 2002 [PubMed 12509226]).[supplied by OMIM, Mar 2008],



Western Blot analysis of various cells using NEIL3 Polyclonal Antibody diluted at 1:2000 cells nucleus extracted by Minute TM Cytoplasmic and Nuclear Fractionation kit (SC-003, Invent biotech, MN, USA).



Western blot analysis of lysates from HeLa, HepG2, HUVEC, and COLO cells, using NEIL3 Antibody. The lane on the right is blocked with the synthesized peptide.



Immunohistochemical analysis of paraffin-embedded human Breast cancer. 1, Antibody was diluted at 1:200(4° overnight). 2, Tris-EDTA,pH9.0 was used for antigen retrieval. 3,Secondary antibody was diluted at 1:200(room temperature, 45min).