

**NEIL1 rabbit pAb****Cat#: orb765791 (Manual)**

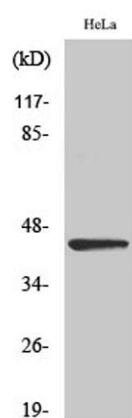
For research use only. Not intended for diagnostic use.

<b>Product Name</b>	NEIL1 rabbit pAb
<b>Host species</b>	Rabbit
<b>Applications</b>	WB;ELISA
<b>Species Cross-Reactivity</b>	Human;Rat;Mouse;
<b>Recommended dilutions</b>	Western Blot: 1/500 - 1/2000. ELISA: 1/20000. Not yet tested in other applications.
<b>Immunogen</b>	The antiserum was produced against synthesized peptide derived from human NEIL1. AA range:291-340
<b>Specificity</b>	NEIL1 Polyclonal Antibody detects endogenous levels of NEIL1 protein.
<b>Formulation</b>	Liquid in PBS containing 50% glycerol, 0.5% BSA and 0.02% sodium azide..
<b>Storage</b>	Store at -20°C. Avoid repeated freeze-thaw cycles.
<b>Protein Name</b>	Endonuclease 8-like 1
<b>Gene Name</b>	NEIL1
<b>Cellular localization</b>	Cytoplasm, cytoskeleton, microtubule organizing center, centrosome . Nucleus . Chromosome . During mitosis, associates with centrosomes and condensed chromatin.
<b>Purification</b>	The antibody was affinity-purified from rabbit antiserum by affinity-chromatography using epitope-specific immunogen.

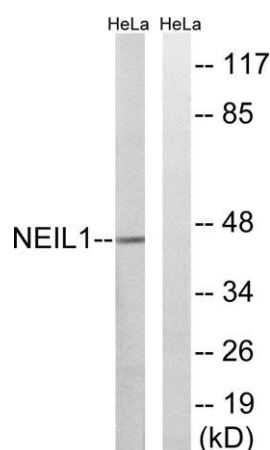
<b>Clonality</b>	Polyclonal
<b>Concentration</b>	1 mg/ml
<b>Observed band</b>	44kD
<b>Human Gene ID</b>	79661
<b>Human Swiss-Prot Number</b>	Q96FI4
<b>Alternative Names</b>	NEIL1; Endonuclease 8-like 1; DNA glycosylase/AP lyase Neil1; DNA-(apurinic or apyrimidinic site) lyase Neil1; Endonuclease VIII-like 1; FPG1; Nei homolog 1; NEH1; Nei-like protein 1

### Background

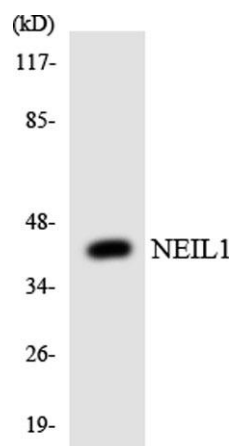
This gene is a member of the Nei endonuclease VIII-like gene family which encodes DNA glycosylases. The encoded enzyme participates in the DNA repair pathway by initiating base excision repair by removing damaged bases, primarily oxidized pyrimidines. Multiple transcript variants encoding different isoforms have been found for this gene. [provided by RefSeq, Feb 2012],



**Western Blot analysis of various cells using NEIL1 Polyclonal Antibody**



**Western blot analysis of lysates from HeLa cells, using NEIL1 Antibody. The lane on the right is blocked with the synthesized peptide.**



Western blot analysis of the lysates from HeLa cells using NEIL1 antibody.