

NEGR1 rabbit pAb

Cat#: orb765790 (Manual)

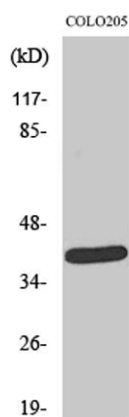
For research use only. Not intended for diagnostic use.

Product Name	NEGR1 rabbit pAb
Host species	Rabbit
Applications	WB;ELISA
Species Cross-Reactivity	Human;Mouse;Rat
Recommended dilutions	Western Blot: 1/500 - 1/2000. ELISA: 1/20000. Not yet tested in other applications.
Immunogen	The antiserum was produced against synthesized peptide derived from human NEGR1. AA range:172-221
Specificity	NEGR1 Polyclonal Antibody detects endogenous levels of NEGR1 protein.
Formulation	Liquid in PBS containing 50% glycerol, 0.5% BSA and 0.02% sodium azide..
Storage	Store at -20°C. Avoid repeated freeze-thaw cycles.
Protein Name	Neuronal growth regulator 1
Gene Name	NEGR1
Cellular localization	Cell membrane ; Lipid-anchor, GPI-anchor .
Purification	The antibody was affinity-purified from rabbit antiserum by affinity-chromatography using epitope-specific immunogen.
Clonality	Polyclonal

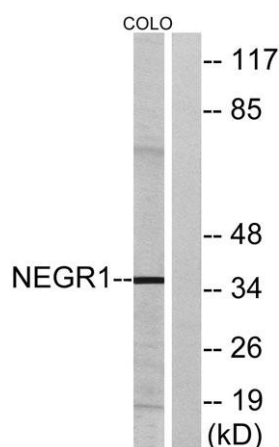
Concentration	1 mg/ml
Observed band	35kD
Human Gene ID	257194
Human Swiss-Prot Number	Q7Z3B1
Alternative Names	NEGR1; IGLON4; Neuronal growth regulator 1; IgLON family member 4

Background

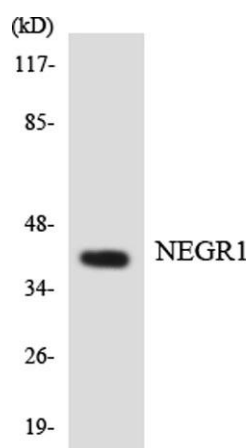
function: May be involved in cell-adhesion. May function as a trans-neural growth-promoting factor in regenerative axon sprouting in the mammalian brain., similarity: Belongs to the immunoglobulin superfamily. IgLON family., similarity: Contains 3 Ig-like C2-type (immunoglobulin-like) domains.,



Western Blot analysis of various cells using NEGR1 Polyclonal Antibody



Western blot analysis of lysates from COLO cells, using NEGR1 Antibody. The lane on the right is blocked with the synthesized peptide.



Western blot analysis of the lysates from COLO205 cells using NEGR1 antibody.