

## Nectin 3 rabbit pAb

**Cat#: orb765787 (Manual)**

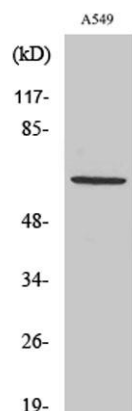
For research use only. Not intended for diagnostic use.

<b>Product Name</b>	Nectin 3 rabbit pAb
<b>Host species</b>	Rabbit
<b>Applications</b>	WB;ELISA
<b>Species Cross-Reactivity</b>	Human;Mouse
<b>Recommended dilutions</b>	Western Blot: 1/500 - 1/2000. ELISA: 1/5000. Not yet tested in other applications.
<b>Immunogen</b>	The antiserum was produced against synthesized peptide derived from human PVRL3. AA range:184-233
<b>Specificity</b>	Nectin 3 Polyclonal Antibody detects endogenous levels of Nectin 3 protein.
<b>Formulation</b>	Liquid in PBS containing 50% glycerol, 0.5% BSA and 0.02% sodium azide..
<b>Storage</b>	Store at -20°C. Avoid repeated freeze-thaw cycles.
<b>Protein Name</b>	Poliovirus receptor-related protein 3
<b>Gene Name</b>	PVRL3
<b>Cellular localization</b>	Cell membrane ; Single-pass membrane protein . Cell junction, synapse, postsynaptic cell membrane .
<b>Purification</b>	The antibody was affinity-purified from rabbit antiserum by affinity-chromatography using      epitope-specific immunogen.
<b>Clonality</b>	Polyclonal

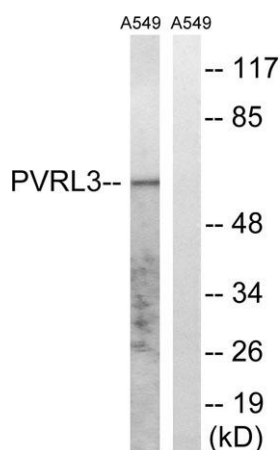
<b>Concentration</b>	1 mg/ml
<b>Observed band</b>	61kD
<b>Human Gene ID</b>	25945
<b>Human Swiss-Prot Number</b>	Q9NQS3
<b>Alternative Names</b>	PVRL3; PRR3; Poliovirus receptor-related protein 3; CDw113; Nectin-3; CD antigen CD113

### Background

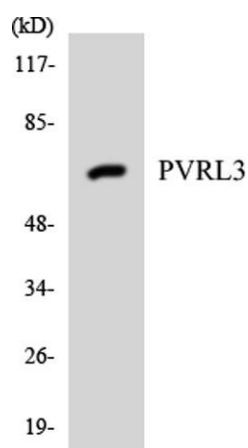
This gene encodes a member of the nectin family of proteins, which function as adhesion molecules at adherens junctions. This family member interacts with other nectin-like proteins and with afadin, a filamentous actin-binding protein involved in the regulation of directional motility, cell proliferation and survival. This gene plays a role in ocular development involving the ciliary body. Mutations in this gene are believed to result in congenital ocular defects. Alternative splicing results in multiple transcript variants. [provided by RefSeq, Aug 2011],



Western Blot analysis of various cells using Nectin 3 Polyclonal Antibody



Western blot analysis of lysates from A549 cells, using PVRL3 Antibody. The lane on the right is blocked with the synthesized peptide.



Western blot analysis of the lysates from HUVEC cells using PVRL3 antibody.