

NARG1 rabbit pAb

Cat#: orb765773 (Manual)

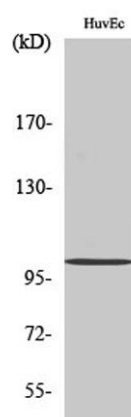
For research use only. Not intended for diagnostic use.

Product Name	NARG1 rabbit pAb
Host species	Rabbit
Applications	WB;IHC;IF;ELISA
Species Cross-Reactivity	Human;Mouse
Recommended dilutions	Western Blot: 1/500 - 1/2000. Immunohistochemistry: 1/100 - 1/300. Immunofluorescence: 1/200 - 1/1000. ELISA: 1/20000. Not yet tested in other applications.
Immunogen	The antiserum was produced against synthesized peptide derived from human NARG1. AA range:221-270
Specificity	NARG1 Polyclonal Antibody detects endogenous levels of NARG1 protein.
Formulation	Liquid in PBS containing 50% glycerol, 0.5% BSA and 0.02% sodium azide..
Storage	Store at -20°C. Avoid repeated freeze-thaw cycles.
Protein Name	N-alpha-acetyltransferase 15 NatA auxiliary subunit
Gene Name	NAA15
Cellular localization	Cytoplasm. Nucleus. Mainly cytoplasmic, nuclear in some cases. Present in the free cytosolic and cytoskeleton-bound polysomes, but not in the membrane-bound polysomes.
Purification	The antibody was affinity-purified from rabbit antiserum by affinity-chromatography using epitope-specific immunogen.

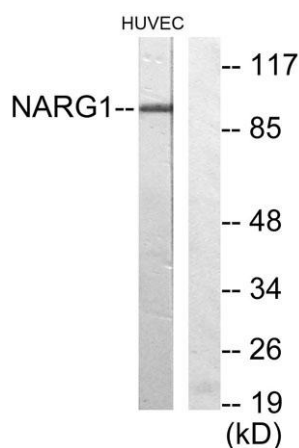
Clonality	Polyclonal
Concentration	1 mg/ml
Observed band	100kD
Human Gene ID	80155
Human Swiss-Prot Number	Q9BXJ9
Alternative Names	NAA15; GA19; NARG1; NATH; TBDN100; N-alpha-acetyltransferase 15; NatA auxiliary subunit; Gastric cancer antigen Ga19; N-terminal acetyltransferase; NMDA receptor-regulated protein 1; Protein tubedown-1; Tbdn100

Background

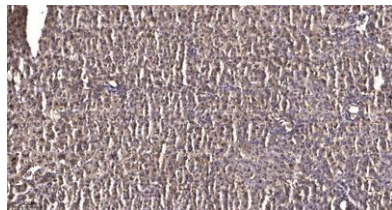
This gene encodes a protein of unknown function. However, similarity to proteins in yeast and other species suggests that this protein may be an N-acetyltransferase. [provided by RefSeq, Jul 2008],



Western Blot analysis of various cells using NARG1 Polyclonal Antibody



Western blot analysis of lysates from HUVEC cells, using NARG1 Antibody. The lane on the right is blocked with the synthesized peptide.



Immunohistochemical analysis of paraffin-embedded human liver cancer. 1, Antibody was diluted at 1:200(4° overnight). 2, Tris-EDTA,pH9.0 was used for antigen retrieval. 3,Secondary antibody was diluted at 1:200(room temperature, 45min).