

N4BP1 rabbit pAb**Cat#: orb765763 (Manual)**

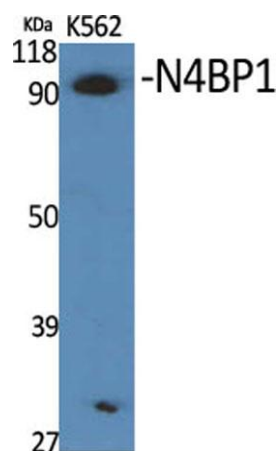
For research use only. Not intended for diagnostic use.

Product Name	N4BP1 rabbit pAb
Host species	Rabbit
Applications	WB;IHC;IF;ELISA
Species Cross-Reactivity	Human;Rat;Mouse;
Recommended dilutions	Western Blot: 1/500 - 1/2000. Immunohistochemistry: 1/100 - 1/300. ELISA: 1/40000. Not yet tested in other applications.
Immunogen	The antiserum was produced against synthesized peptide derived from human N4BP1. AA range:383-432
Specificity	N4BP1 Polyclonal Antibody detects endogenous levels of N4BP1 protein.
Formulation	Liquid in PBS containing 50% glycerol, 0.5% BSA and 0.02% sodium azide..
Storage	Store at -20°C. Avoid repeated freeze-thaw cycles.
Protein Name	NEDD4-binding protein 1
Gene Name	N4BP1
Cellular localization	Cytoplasm, cytosol . Nucleus . Nucleus, nucleolus . Nucleus, PML body . Primarily localizes to the nucleolus. Also localizes to the PML nuclear bodies, when desumoylated. .
Purification	The antibody was affinity-purified from rabbit antiserum by affinity-chromatography using epitope-specific immunogen.

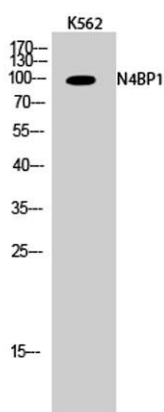
Clonality	Polyclonal
Concentration	1 mg/ml
Observed band	100kD
Human Gene ID	9683
Human Swiss-Prot Number	O75113
Alternative Names	N4BP1; KIAA0615; NEDD4-binding protein 1; N4BP1

Background

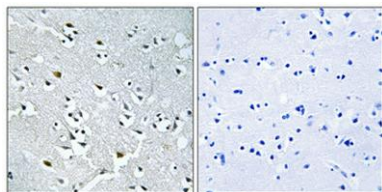
PTM: Monoubiquitinated.,PTM: Phosphorylated upon DNA damage, probably by ATM or ATR.,similarity: Belongs to the N4BP1 family.,subcellular location: In discrete circular structures.,subunit: Binds NEDD4.,tissue specificity: Detected in heart, lung, brain, liver, skeletal muscle, pancreas, kidney, spleen, testis and ovary.,



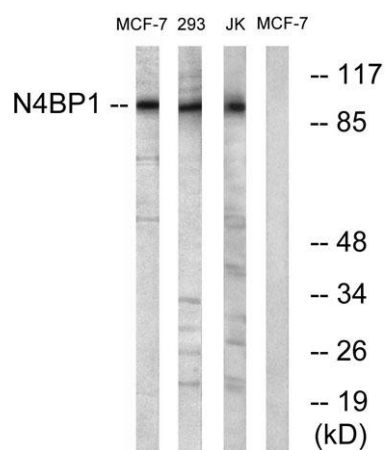
Western Blot analysis of various cells using N4BP1 Polyclonal Antibody cells nucleus extracted by Minute TM Cytoplasmic and Nuclear Fractionation kit (SC-003, Invent biotech, MN, USA).



Western Blot analysis of K562 cells using N4BP1 Polyclonal Antibody cells nucleus extracted by Minute TM Cytoplasmic and Nuclear Fractionation kit (SC-003, Invent biotech, MN, USA).



Immunohistochemical analysis of paraffin-embedded Human brain. Antibody was diluted at 1:100(4° overnight). High-pressure and temperature Tris-EDTA,pH8.0 was used for antigen retrieval. Negative contrl (right) obtained from antibody was pre-absorbed by immunogen peptide.



Western blot analysis of lysates from MCF-7 and Jurkat/293 cells, using N4BP1 Antibody. The lane on the right is blocked with the synthesized peptide.