

Myp rabbit pAb**Cat#: orb765756 (Manual)**

For research use only. Not intended for diagnostic use.

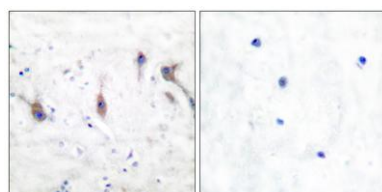
Product Name	Myp rabbit pAb
Host species	Rabbit
Applications	WB;IHC;IF;ELISA
Species Cross-Reactivity	Human;Rat;Mouse;
Recommended dilutions	Western Blot: 1/500 - 1/2000. Immunohistochemistry: 1/100 - 1/300. Immunofluorescence: 1/200 - 1/1000. ELISA: 1/20000. Not yet tested in other applications.
Immunogen	The antiserum was produced against synthesized peptide derived from human ARC. AA range:159-208
Specificity	Myp Polyclonal Antibody detects endogenous levels of Myp protein.
Formulation	Liquid in PBS containing 50% glycerol, 0.5% BSA and 0.02% sodium azide..
Storage	Store at -20°C. Avoid repeated freeze-thaw cycles.
Protein Name	Nucleolar protein 3
Gene Name	NOL3
Cellular localization	[Isoform 1]: Nucleus, nucleolus . The SR-rich C-terminus mediates nuclear localization. .; [Isoform 3]: Cytoplasm .; [Isoform 2]: Cytoplasm . Mitochondrion . Sarcoplasmic reticulum . Membrane ; Lipid-anchor . Phosphorylation at Thr-149 results in translocation to mitochondria. Colocalized with mitochondria in response to oxidative stress. .
Purification	The antibody was affinity-purified from rabbit antiserum by affinity-chromatography using epitope-specific immunogen.

Clonality	Polyclonal
Concentration	1 mg/ml
Observed band	28kD
Human Gene ID	8996
Human Swiss-Prot Number	O60936-2
Alternative Names	Myp; NOL3; Nop30; Nucleolar protein 3; apoptosis repressor ARC; apoptosis repressor with CARD; apoptosis repressor with caspase recruitment domain (CARD); muscle-enriched cytoplasmic protein; nucleolar protein of 30 kDa

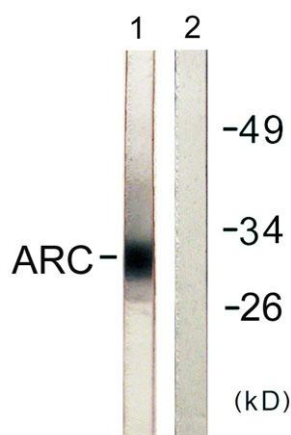
Background NOL3 encodes an anti-apoptotic protein nucleolar protein 3 that has been shown to down-regulate the enzyme activities of caspase 2, caspase 8 and tumor protein p53. Multiple transcript variants encoding different isoforms have been found for NOL3.



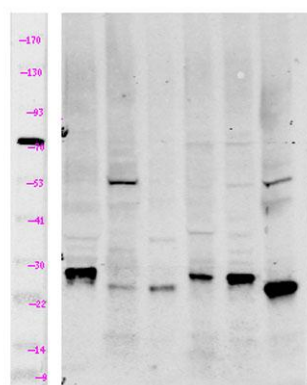
Western Blot analysis of various cells using Myp Polyclonal Antibody



Immunohistochemistry analysis of paraffin-embedded human brain tissue, using ARC Antibody. The picture on the right is blocked with the synthesized peptide.



Western blot analysis of lysates from HeLa cells, using ARC Antibody. The lane on the right is blocked with the synthesized peptide.



Western Blot analysis of lane1 mouse-brain, lane2 mouse-kidney, lane3 HeLa, lane4 MCF7, lane5 293T, lane6 mouse-muscle using primary antibody at 1:1000 dilution 4°C, overnight. Secondary antibody(catalog#:RS23920) was diluted at 1:10000 25°C, 1.5hours