

MVK rabbit pAb**Cat#: orb765745 (Manual)**

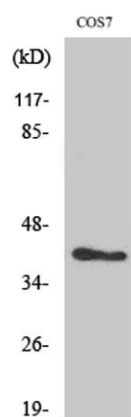
For research use only. Not intended for diagnostic use.

Product Name	MVK rabbit pAb
Host species	Rabbit
Applications	WB;IHC;IF;ELISA
Species Cross-Reactivity	Human;Monkey
Recommended dilutions	Western Blot: 1/500 - 1/2000. Immunohistochemistry: 1/100 - 1/300. Immunofluorescence: 1/200 - 1/1000. ELISA: 1/10000. Not yet tested in other applications.
Immunogen	The antiserum was produced against synthesized peptide derived from human Mevalonate Kinase. AA range:151-200
Specificity	MVK Polyclonal Antibody detects endogenous levels of MVK protein.
Formulation	Liquid in PBS containing 50% glycerol, 0.5% BSA and 0.02% sodium azide..
Storage	Store at -20°C. Avoid repeated freeze-thaw cycles.
Protein Name	Mevalonate kinase
Gene Name	MVK
Cellular localization	Cytoplasm . Peroxisome .
Purification	The antibody was affinity-purified from rabbit antiserum by affinity-chromatography using epitope-specific immunogen.
Clonality	Polyclonal

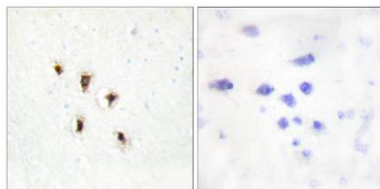
Concentration	1 mg/ml
Observed band	42kD
Human Gene ID	4598
Human Swiss-Prot Number	Q03426
Alternative Names	MVK; Mevalonate kinase; MK

Background

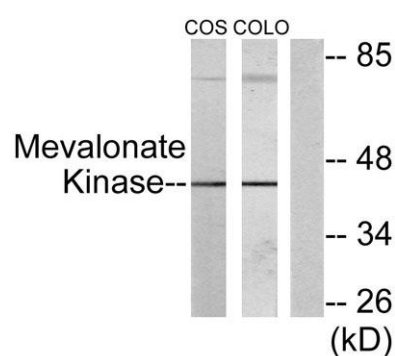
This gene encodes the peroxisomal enzyme mevalonate kinase. Mevalonate is a key intermediate, and mevalonate kinase a key early enzyme, in isoprenoid and sterol synthesis. Mevalonate kinase deficiency caused by mutation of this gene results in mevalonic aciduria, a disease characterized by psychomotor retardation, failure to thrive, hepatosplenomegaly, anemia and recurrent febrile crises. Defects in this gene also cause hyperimmunoglobulinaemia D and periodic fever syndrome, a disorder characterized by recurrent episodes of fever associated with lymphadenopathy, arthralgia, gastrointestinal distension and skin rash. Alternative splicing results in multiple transcript variants. [provided by RefSeq, Jul 2014],



Western Blot analysis of various cells using MVK Polyclonal Antibody



Immunohistochemistry analysis of paraffin-embedded human brain tissue, using Mevalonate Kinase Antibody. The picture on the right is blocked with the synthesized peptide.



Western blot analysis of lysates from COS7 and COLO205 cells, using Mevalonate Kinase Antibody. The lane on the right is blocked with the synthesized peptide.