

MRP-S35 rabbit pAb**Cat#: orb765727 (Manual)**

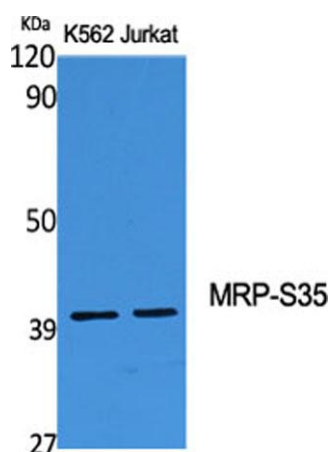
For research use only. Not intended for diagnostic use.

Product Name	MRP-S35 rabbit pAb
Host species	Rabbit
Applications	WB;IHC;IF;ELISA
Species Cross-Reactivity	Human;Rat;Mouse;
Recommended dilutions	Western Blot: 1/500 - 1/2000. Immunohistochemistry: 1/100 - 1/300. ELISA: 1/40000. Not yet tested in other applications.
Immunogen	The antiserum was produced against synthesized peptide derived from human MRPS35. AA range:211-260
Specificity	MRP-S35 Polyclonal Antibody detects endogenous levels of MRP-S35 protein.
Formulation	Liquid in PBS containing 50% glycerol, 0.5% BSA and 0.02% sodium azide..
Storage	Store at -20°C. Avoid repeated freeze-thaw cycles.
Protein Name	28S ribosomal protein S35 mitochondrial
Gene Name	MRPS35
Cellular localization	Mitochondrion .
Purification	The antibody was affinity-purified from rabbit antiserum by affinity-chromatography using epitope-specific immunogen.
Clonality	Polyclonal

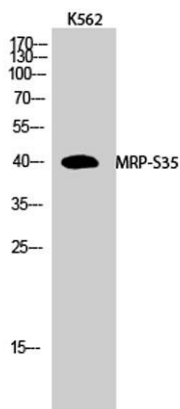
Concentration	1 mg/ml
Observed band	40kD
Human Gene ID	60488
Human Swiss-Prot Number	P82673
Alternative Names	MRPS35; MRPS28; HDCMD11P; MDS023; PSEC0213; 28S ribosomal protein S35; mitochondrial; MRP-S35; S35mt; 28S ribosomal protein S28, mitochondrial; MRP-S28; S28mt

Background

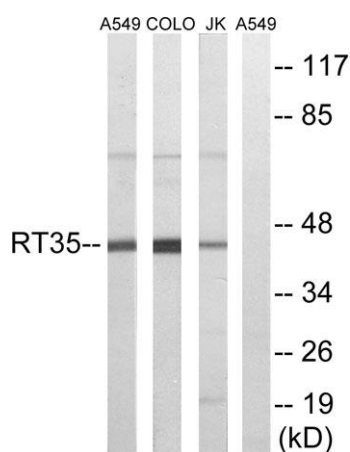
Mammalian mitochondrial ribosomal proteins are encoded by nuclear genes and help in protein synthesis within the mitochondrion. Mitochondrial ribosomes (mitoribosomes) consist of a small 28S subunit and a large 39S subunit. They have an estimated 75% protein to rRNA composition compared to prokaryotic ribosomes, where this ratio is reversed. Another difference between mammalian mitoribosomes and prokaryotic ribosomes is that the latter contain a 5S rRNA. Among different species, the proteins comprising the mitoribosome differ greatly in sequence, and sometimes in biochemical properties, which prevents easy recognition by sequence homology. This gene encodes a 28S subunit protein that has had confusing nomenclature in the literature. Alternatively spliced transcript variants encoding different isoforms have been found for this gene. Pseudogenes corresponding to this gene are found on



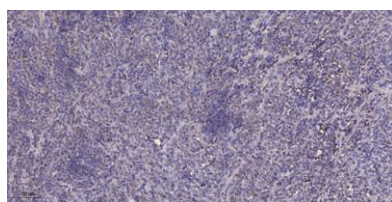
Western Blot analysis of various cells using MRP-S35 Polyclonal Antibody



Western Blot analysis of K562 cells using MRP-S35 Polyclonal Antibody



Western blot analysis of lysates from Jurkat, COLO, and A549 cells, using MRPS35 Antibody. The lane on the right is blocked with the synthesized peptide.



Immunohistochemical analysis of paraffin-embedded human Colon cancer. 1, Antibody was diluted at 1:200(4° overnight). 2, Tris-EDTA,pH9.0 was used for antigen retrieval. 3,Secondary antibody was diluted at 1:200(room temperature, 45min).