

MRP-L9 rabbit pAb**Cat#: orb765720 (Manual)**

For research use only. Not intended for diagnostic use.

Product Name	MRP-L9 rabbit pAb
Host species	Rabbit
Applications	WB;IHC
Species Cross-Reactivity	Human;Rat;Mouse;
Recommended dilutions	WB 1:500-2000;IHC-p 1:50-300
Immunogen	The antiserum was produced against synthesized peptide derived from human MRPL9. AA range:211-260
Specificity	MRP-L9 Polyclonal Antibody detects endogenous levels of MRP-L9 protein.
Formulation	Liquid in PBS containing 50% glycerol, 0.5% BSA and 0.02% sodium azide..
Storage	Store at -20°C. Avoid repeated freeze-thaw cycles.
Protein Name	39S ribosomal protein L9 mitochondrial
Gene Name	MRPL9
Cellular localization	Mitochondrion .
Purification	The antibody was affinity-purified from rabbit antiserum by affinity-chromatography using epitope-specific immunogen.
Clonality	Polyclonal

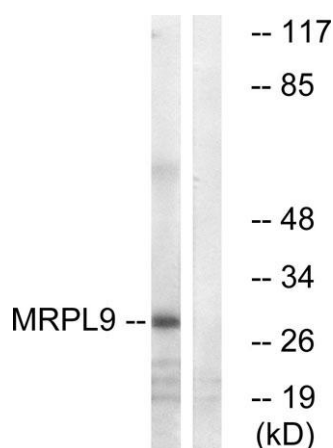
Concentration	1 mg/ml
Observed band	30kD
Human Gene ID	65005
Human Swiss-Prot Number	Q9BYD2
Alternative Names	MRPL9; 39S ribosomal protein L9; mitochondrial; L9mt; MRP-L9

Background

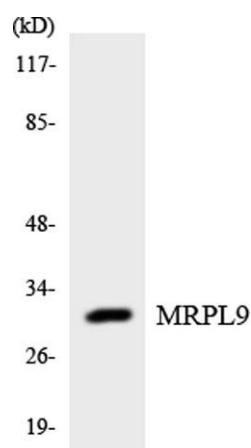
This is a nuclear gene encoding a protein component of the 39S subunit of the mitochondrial ribosome. Alternative splicing results in multiple transcript variants. A pseudogene of this gene is found on chromosome 8. [provided by RefSeq, Jul 2014],



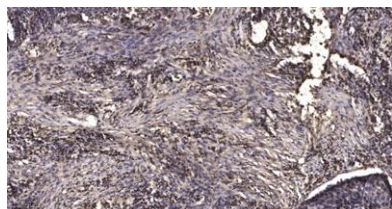
Western Blot analysis of various cells using MRP-L9 Polyclonal Antibody



Western blot analysis of lysates from COLO cells, using MRPL9 Antibody. The lane on the right is blocked with the synthesized peptide.



Western blot analysis of the lysates from HUVEC cells using MRPL9 antibody.



Immunohistochemical analysis of paraffin-embedded human Squamous cell carcinoma of lung. 1, Antibody was diluted at 1:200 (4° overnight). 2, Tris-EDTA, pH 9.0 was used for antigen retrieval. 3, Secondary antibody was diluted at 1:200 (room temperature, 45 min).