

**MRP-L20 rabbit pAb****Cat#: orb765709 (Manual)**

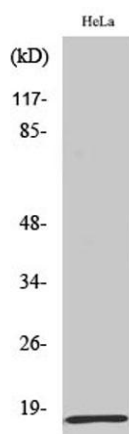
For research use only. Not intended for diagnostic use.

<b>Product Name</b>	MRP-L20 rabbit pAb
<b>Host species</b>	Rabbit
<b>Applications</b>	WB;IHC;IF;ELISA
<b>Species Cross-Reactivity</b>	Human;Mouse;Rat
<b>Recommended dilutions</b>	Western Blot: 1/500 - 1/2000. Immunohistochemistry: 1/100 - 1/300. ELISA: 1/40000. Not yet tested in other applications.
<b>Immunogen</b>	The antiserum was produced against synthesized peptide derived from human MRPL20. AA range:100-149
<b>Specificity</b>	MRP-L20 Polyclonal Antibody detects endogenous levels of MRP-L20 protein.
<b>Formulation</b>	Liquid in PBS containing 50% glycerol, 0.5% BSA and 0.02% sodium azide..
<b>Storage</b>	Store at -20°C. Avoid repeated freeze-thaw cycles.
<b>Protein Name</b>	39S ribosomal protein L20 mitochondrial
<b>Gene Name</b>	MRPL20
<b>Cellular localization</b>	Mitochondrion .
<b>Purification</b>	The antibody was affinity-purified from rabbit antiserum by affinity-chromatography using epitope-specific immunogen.
<b>Clonality</b>	Polyclonal

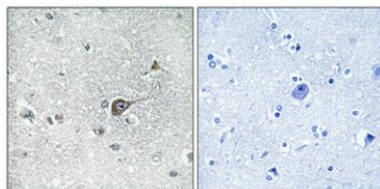
<b>Concentration</b>	1 mg/ml
<b>Observed band</b>	22kD
<b>Human Gene ID</b>	55052
<b>Human Swiss-Prot Number</b>	Q9BYC9
<b>Alternative Names</b>	MRPL20; 39S ribosomal protein L20; mitochondrial; L20mt; MRP-L20

### Background

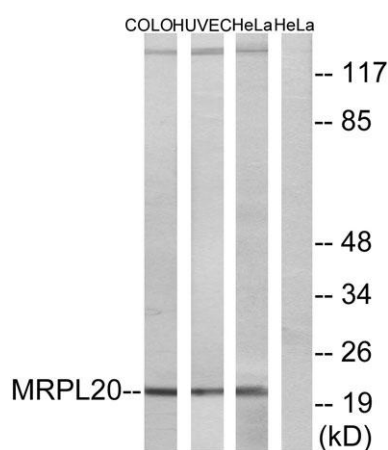
Mammalian mitochondrial ribosomal proteins are encoded by nuclear genes and help in protein synthesis within the mitochondrion. Mitochondrial ribosomes (mitoribosomes) consist of a small 28S subunit and a large 39S subunit. They have an estimated 75% protein to rRNA composition compared to prokaryotic ribosomes, where this ratio is reversed. Another difference between mammalian mitoribosomes and prokaryotic ribosomes is that the latter contain a 5S rRNA. Among different species, the proteins comprising the mitoribosome differ greatly in sequence, and sometimes in biochemical properties, which prevents easy recognition by sequence homology. This gene encodes a 39S subunit protein. A pseudogene corresponding to this gene is found on chromosome 21q. Alternative splicing results in multiple transcript variants encoding different isoforms. [provided by RefSeq, Jan 2016],



**Western Blot analysis of various cells using MRP-L20 Polyclonal Antibody**



**Immunohistochemical analysis of paraffin-embedded Human brain. Antibody was diluted at 1:100(4° overnight). High-pressure and temperature Tris-EDTA,pH8.0 was used for antigen retrieval. Negative contrl (right) obtained from antibody was pre-absorbed by i**



**Western blot analysis of lysates from Hela, HUVEC, and COLO cells, using MRPL20 Antibody. The lane on the right is blocked with the synthesized peptide.**